



[Go to Product page](#)

Datasheet for ABIN1313754

## OTUD5 Protein (AA 1-542) (GST tag)

### 1 Image

#### Overview

Quantity:	10 µg
Target:	OTUD5
Protein Characteristics:	AA 1-542
Origin:	Human
Source:	Wheat germ
Protein Type:	Recombinant
Purification tag / Conjugate:	This OTUD5 protein is labelled with GST tag.
Application:	ELISA, Western Blotting (WB), Affinity Purification (AP), Antibody Array (AA)

#### Product Details

Purpose:	OTUD5 (Human) Recombinant Protein (P01)
Sequence:	MTILPKKKPP PPDADPGGTG VGGGDRDRDS GVVGARPRAS PPPQGPLPGP PGALHRWALA VPPGAVAGPR PQQASPPPCG GPGGPGGGPG DALGAAAAGV GAAGVVVGVG GAVGVGGCCS GPGHSKRRRQ APGVGAVGGG SPEREEVGAG YNSEDEYEA AARIEAMDPA TVEQQEHWFE KALRDKKGFI IKQMKEDGAC LFRVADQVY GDQDMHEVVR KHCMDYLMKN ADYFSNYVTE DFTTYINRKR KNNCHGNHIE MQAMAEMYNR PVEVYQYSTE PINTFHGIHQ NEDEPIRVSY HRNIHNSV V NPNKATIGVG LGLPSFKPGF AEQSLMKNAI KTSEESWIEQ QMLEDKKRAT DWEATNEAIE EQVARESYLQ WLRDQEKQAR QVRGPSQPRK ASATCSSATA AASSGLEEWT SRSPRQRSSA SSPEHPELHA ELGMKPPSPG TVLALAKPPS PCAPGTSSQF SAGADRATSP LVSLYPALEC RALIQQMSPS AFGLNDWDDD EILASVLAVS QQEYLD SMKK NKVHRDPPPD KS
Characteristics:	Human OTUD5 full-length ORF ( AAH98440.1, 1 a.a. - 542 a.a.) recombinant protein with GST-tag at N-terminal.

## Product Details

---

Purification: in vitro wheat germ expression system

## Target Details

---

Target: OTUD5

Alternative Name: OTUD5 ([OTUD5 Products](#))

Background: Full Gene Name: OTU domain containing 5  
Synonyms: DKFZp761A052,DUBA,MGC104871

Gene ID: 55593

## Application Details

---

Application Notes: Optimal working dilution should be determined by the investigator.

Comment: Preparation method: in vitro, wheat germ expression system  
Product Quality tested by: 12.5% SDS-PAGE Stained with Coomassie Blue.

Restrictions: For Research Use only

## Handling

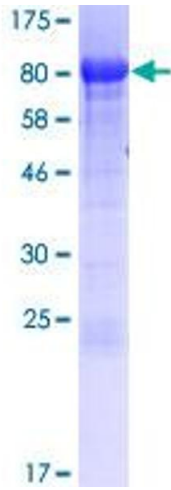
---

Buffer: 50 mM Tris-HCl, 10 mM reduced Glutathione, pH =8.0 in the elution buffer.

Handling Advice: Aliquot to avoid repeated freezing and thawing.

Storage: -80 °C

Storage Comment: Best use within three months from the date of receipt of this protein.



**Image 1.**