



[Go to Product page](#)

Datasheet for ABIN1313775
OVOL1 Protein (AA 1-267) (GST tag)

1 Image

Overview

Quantity:	10 µg
Target:	OVOL1
Protein Characteristics:	AA 1-267
Origin:	Human
Source:	Wheat germ
Protein Type:	Recombinant
Purification tag / Conjugate:	This OVOL1 protein is labelled with GST tag.
Application:	ELISA, Western Blotting (WB), Affinity Purification (AP), Antibody Array (AA)

Product Details

Purpose:	OVOL1 (Human) Recombinant Protein (P02)
Sequence:	MPRAFLVKKP CVSTCKRNWS ELPDEERGEI YVPVSLGFCP PQPYREPEPS VAEPSCPLA LNMSLRDSSY SMAPGPCVVA QLPSEDMGHL TDPQSRDHGF LRTKMKVTLG DSPSGDLFTC RVCQKAFTYQ RMLNRHMKCH NDVKRHLCTY CGKGFNDTFD LKRHVRHTTG VRPYKCSLCD KAFTQRCSLE SHLKKIHGVQ QKYAYKERRA KLYVCEECCG TSESQEGHVL HLKEHHPDSP LLRKTSKKVA VALQNTVTSL LQGSPHL
Characteristics:	Human OVOL1 full-length ORF (NP_004552.2, 1 a.a. - 267 a.a.) recombinant protein with GST-tag at N-terminal.
Purification:	in vitro wheat germ expression system

Target Details

Target:	OVOL1
Alternative Name:	OVOL1 (OVOL1 Products)
Background:	Full Gene Name: ovo-like 1(Drosophila) Synonyms: HOVO1
Gene ID:	5017
NCBI Accession:	NM_004561

Application Details

Application Notes:	Optimal working dilution should be determined by the investigator.
Comment:	Preparation method: in vitro, wheat germ expression system Product Quality tested by: 12.5% SDS-PAGE Stained with Coomassie Blue.
Restrictions:	For Research Use only

Handling

Buffer:	50 mM Tris-HCl, 10 mM reduced Glutathione, pH =8.0 in the elution buffer.
Handling Advice:	Aliquot to avoid repeated freezing and thawing.
Storage:	-80 °C
Storage Comment:	Best use within three months from the date of receipt of this protein.

Images

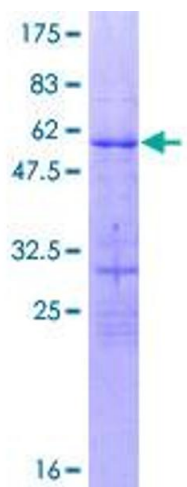


Image 1.