



[Go to Product page](#)

Datasheet for ABIN1313783

OXCT1 Protein (AA 1-520) (GST tag)

1 Image

Overview

Quantity:	10 µg
Target:	OXCT1
Protein Characteristics:	AA 1-520
Origin:	Human
Source:	Wheat germ
Protein Type:	Recombinant
Purification tag / Conjugate:	This OXCT1 protein is labelled with GST tag.
Application:	Western Blotting (WB), ELISA, Affinity Purification (AP), Antibody Array (AA)

Product Details

Purpose:	OXCT1 (Human) Recombinant Protein (P01)
Sequence:	MAALKLLSSG LRLCASARGS GATWYKGCVC SFSTSAHRHT KFYTDPVEAV KDIPDGATVL VGGFGLCGIP ENLIDALLKT GVKGLTAVSN NAGVDNFGGLG LLLRSKQIKR MVSSYVGENA EFERQYLSGE LEVELTPQGT LAERIRAGGA GVPAFYTPTG YGTLVQEGGS PIKYNKDGSV AIASKPREVR EFNQHFHFILE EAITGDFALV KAWKADRAGN VIFRKSARNF NLPMCKAAET TVVEVEEIVD IGAFAPEDIH IPQIYVHRLI KGEKYEKRIE RLSIRKEGDG EAKSAKPGDD VRERIIKRAA LEFEDGMYAN LGIGIPLLAS NFISPNTVH LQSENGVLGL GPYPRQHEAD ADLINAGKET VTILPGASFF SDESDEFAMIR GGHVDLTMLG AMQVSKYGDL ANWMIPGKMV KGMGGAMDLV SSAKTKVVVT MEHSAKGNAH KIMEKCTLPL TGKQCVNRII TEKAVFDVVK KKGLTLIELW EGLTVDDVQK STGCDFAVSP KLMPMQQIAN
Characteristics:	Human OXCT1 full-length ORF (AAH09001, 1 a.a. - 520 a.a.) recombinant protein with GST-tag at N-terminal.

Product Details

Purification: in vitro wheat germ expression system

Target Details

Target: OXCT1

Alternative Name: OXCT1 ([OXCT1 Products](#))

Background: Full Gene Name: 3-oxoacid CoA transferase 1
Synonyms: OXCT,SCOT

Gene ID: 5019

Pathways: [Positive Regulation of Peptide Hormone Secretion, Carbohydrate Homeostasis](#)

Application Details

Application Notes: Optimal working dilution should be determined by the investigator.

Comment: Preparation method: in vitro, wheat germ expression system
Product Quality tested by: 12.5% SDS-PAGE Stained with Coomassie Blue.

Restrictions: For Research Use only

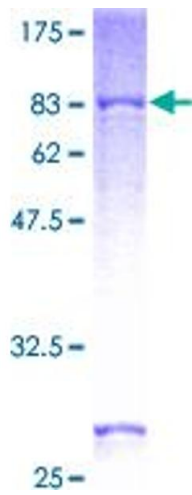
Handling

Buffer: 50 mM Tris-HCl, 10 mM reduced Glutathione, pH =8.0 in the elution buffer.

Handling Advice: Aliquot to avoid repeated freezing and thawing.

Storage: -80 °C

Storage Comment: Best use within three months from the date of receipt of this protein.



SDS-PAGE

Image 1.