

Datasheet for ABIN1313798

**OXSRI Protein (AA 351-450) (GST tag)**[Go to Product page](#)**1** Image

## Overview

Quantity:	10 µg
Target:	OXSRI
Protein Characteristics:	AA 351-450
Origin:	Human
Source:	Wheat germ
Protein Type:	Recombinant
Purification tag / Conjugate:	This OXSRI protein is labelled with GST tag.
Application:	ELISA, Western Blotting (WB), Affinity Purification (AP), Antibody Array (AA)

## Product Details

Purpose:	OXSRI (Human) Recombinant Protein (Q01)
Sequence:	KAAISQLRSP RVKESISNSE LFPTTDPVGT LLQVPEQISA HLPQPAGQIA TQPTQVSLPP TAEPAKTAQA LSSGSGSQET KIPISLVRL RNSKKELNDI
Characteristics:	Human OXSRI partial ORF ( AAH08726.1, 351 a.a. - 450 a.a.) recombinant protein with GST-tag at N-terminal.
Purification:	in vitro wheat germ expression system

## Target Details

Target:	OXSRI
Alternative Name:	OXSRI ( <a href="#">OXSRI Products</a> )

Target Details

Background: Full Gene Name: oxidative-stress responsive 1  
Synonyms: KIAA1101,OSR1

Gene ID: 9943

Pathways: [Tube Formation](#)

Application Details

Application Notes: Optimal working dilution should be determined by the investigator.

Comment: Preparation method: in vitro, wheat germ expression system  
Product Quality tested by: 12.5% SDS-PAGE Stained with Coomassie Blue.

Restrictions: For Research Use only

Handling

Buffer: 50 mM Tris-HCl, 10 mM reduced Glutathione, pH =8.0 in the elution buffer.

Handling Advice: Aliquot to avoid repeated freezing and thawing.

Storage: -80 °C

Storage Comment: Best use within three months from the date of receipt of this protein.

Images

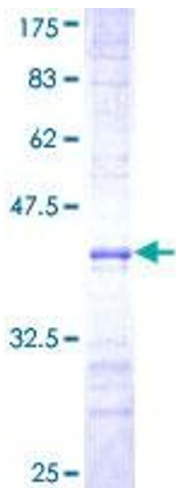


Image 1.