



[Go to Product page](#)

Datasheet for ABIN1313819

P2RY10 Protein (AA 1-339) (GST tag)

1 Image

Overview

Quantity:	25 µg
Target:	P2RY10
Protein Characteristics:	AA 1-339
Origin:	Human
Source:	Wheat germ
Protein Type:	Recombinant
Purification tag / Conjugate:	This P2RY10 protein is labelled with GST tag.
Application:	ELISA, Western Blotting (WB), Affinity Purification (AP), Antibody Array (AA)

Product Details

Purpose:	P2RY10 (Human) Recombinant Protein (P01)
Sequence:	MANLDKYTET FKMGSNSTST AEIYCNVTNV KFYSLYATT YILIFIPGLL ANSAALWVLC RFISKKNKAI IFMINLSVAD LAHVLSLPLR IYYYISHHWP FQRALCLLCF YLKYLNMYAS ICFLTCSLQ RCFLLKPFAR ARDWKRRYDV GISAAIWIVV GTACLPPFIP RSTDNLNNKS CFADLGYKQM NAVALVGMIT VAELAGFVIP VIIIWCTWK TTISLRQPPM AFQGISERQK ALRMVFMCAA VFFICFTPYH INFIFYTMVK ETIISSCPVV RIALYFHPFC LCLASLCLL DPILYYFMAS EFRDQLSRHG SSVTRSRLMS KESGSSMIG
Characteristics:	Human P2RY10 full-length ORF (NP_055314.1, 1 a.a. - 339 a.a.) recombinant protein with GST-tag at N-terminal.
Purification:	in vitro wheat germ expression system

Target Details

Target:	P2RY10
Alternative Name:	P2RY10 (P2RY10 Products)
Background:	Full Gene Name: purinergic receptor P2Y, G-protein coupled, 10 Synonyms: P2Y10
Gene ID:	27334
NCBI Accession:	NM_014499

Application Details

Application Notes:	Optimal working dilution should be determined by the investigator.
Comment:	Preparation method: in vitro, wheat germ expression system Product Quality tested by: 12.5% SDS-PAGE Stained with Coomassie Blue.
Restrictions:	For Research Use only

Handling

Buffer:	50 mM Tris-HCl, 10 mM reduced Glutathione, pH =8.0 in the elution buffer.
Handling Advice:	Aliquot to avoid repeated freezing and thawing.
Storage:	-80 °C
Storage Comment:	Best use within three months from the date of receipt of this protein.

Images

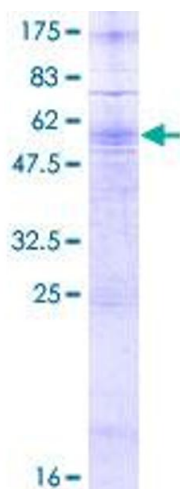


Image 1.