



Datasheet for ABIN1313825
P2RY4 Protein (AA 1-365) (GST tag)



[Go to Product page](#)

1 Image

Overview

Quantity:	10 µg
Target:	P2RY4
Protein Characteristics:	AA 1-365
Origin:	Human
Source:	Wheat germ
Protein Type:	Recombinant
Purification tag / Conjugate:	This P2RY4 protein is labelled with GST tag.
Application:	ELISA, Western Blotting (WB), Affinity Purification (AP), Antibody Array (AA)

Product Details

Purpose:	P2RY4 (Human) Recombinant Protein (P01)
Sequence:	<p>MASTESSLLR SLGLSPGPGS SEVELDCWFD EDFKFILLPV SYAVVFLGL GLNAPTLWLF IFRLRPWDAT ATYMFHLALS DTLYVLSLPT LIYYAAHNH WPGTEICKF VRFLFYWNLY CSVLFLTCIS VHRYLGICHP LRALRWGRPR LAGLLCLAVW LVVAGCLVPN LFFVTTSNKG TTVLCHDTTR PEEFDHYVHF SSAVMGLLFG VPCLVTLVCY GLMARRLYQP LPGSAQSSSR LRSLRTVAVV LTVFAVCFVP FHITRTIYYL ARLLEADCRV LNIVNVVYKV TRPLASANSC LDPVLYLLTG DKYRRQLRQL CGGGKQPRT AASSLALVSL PEDSSCRWAA TTQDSSCSTP RADRL</p>
Characteristics:	Human P2RY4 full-length ORF (AAH96069.1, 1 a.a. - 365 a.a.) recombinant protein with GST-tag at N-terminal.
Purification:	in vitro wheat germ expression system

Target Details

Target:	P2RY4
Alternative Name:	P2RY4 (P2RY4 Products)
Background:	Full Gene Name: pyrimidinergic receptor P2Y, G-protein coupled, 4 Synonyms: NRU,P2P,P2Y4,UNR
Gene ID:	5030

Application Details

Application Notes:	Optimal working dilution should be determined by the investigator.
Comment:	Preparation method: in vitro, wheat germ expression system Product Quality tested by: 12.5% SDS-PAGE Stained with Coomassie Blue.
Restrictions:	For Research Use only

Handling

Buffer:	50 mM Tris-HCl, 10 mM reduced Glutathione, pH =8.0 in the elution buffer.
Handling Advice:	Aliquot to avoid repeated freezing and thawing.
Storage:	-80 °C
Storage Comment:	Best use within three months from the date of receipt of this protein.

Images

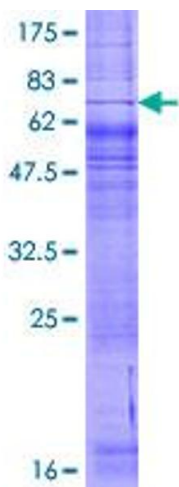


Image 1.