



[Go to Product page](#)

Datasheet for ABIN1313834
P4HA2 Protein (AA 1-533) (GST tag)

1 Image

Overview

Quantity:	10 µg
Target:	P4HA2
Protein Characteristics:	AA 1-533
Origin:	Human
Source:	Wheat germ
Protein Type:	Recombinant
Purification tag / Conjugate:	This P4HA2 protein is labelled with GST tag.
Application:	Western Blotting (WB), ELISA, Affinity Purification (AP), Antibody Array (AA)

Product Details

Purpose:	P4HA2 (Human) Recombinant Protein (P01)
Sequence:	MKLWVSALLM AWFGVLSCVQ AEFFTSIGHM TDLIYAEKEL VQSLKEYILV EEAKLSKIKS WANKMEALTS KSAADAEGYL AHPVNAYKLV KRLNTDWPAL EDLVLQDSAA GFIANLSVQR QFFPTDEDEI GAAKALMRLQ DTYRLDPGTI SRGELPGTKY QAMLSVDDCF GMGRSAYNEG DYYHTVLWME QVLKQLDAGE EATTTKSQVL DYLSYAVFQL GDLHRALELT RRLSLDPSH ERAGGNLRYF EQLLEEEREK TLTNQTEAEL ATPEGIYERP VDYLPERDVY ESLCRGEGVK LTPRRQKRLF CRYHHGNRAP QLLIAPFKEE DEWDSPHIVR YYDVMSDEEI ERIKEIAKPK LARATVRDPK TGVLTVASYR VSKSSWLEED DDPVVARVNR RMQHITGLTV KTAELLQVAN YGVGGQYEPH FDFSRRPFDS GLKTEGNRLA TFLNYMSDVE AGGATVFPDL GAAIWPKKGT AVFWYNLLRS GEGDYRTRHA ACPVLVGCKW VSNKWFHERG QEFLRPGST EVD
Characteristics:	Human P4HA2 full-length ORF (NP_001017973.1, 1 a.a. - 533 a.a.) recombinant protein with GST-tag at N-terminal.

Product Details

Purification: in vitro wheat germ expression system

Target Details

Target: P4HA2

Alternative Name: P4HA2 ([P4HA2 Products](#))

Background: Full Gene Name: prolyl 4-hydroxylase, alpha polypeptide II
Synonyms:

Gene ID: 8974

NCBI Accession: [NM_001017973](#)

Application Details

Application Notes: Optimal working dilution should be determined by the investigator.

Comment: Preparation method: in vitro, wheat germ expression system
Product Quality tested by: 12.5% SDS-PAGE Stained with Coomassie Blue.

Restrictions: For Research Use only

Handling

Buffer: 50 mM Tris-HCl, 10 mM reduced Glutathione, pH =8.0 in the elution buffer.

Handling Advice: Aliquot to avoid repeated freezing and thawing.

Storage: -80 °C

Storage Comment: Best use within three months from the date of receipt of this protein.

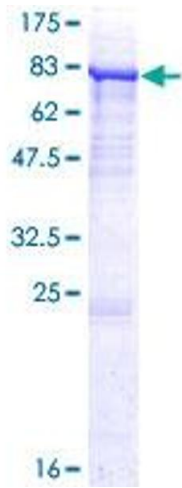


Image 1.