



[Go to Product page](#)

Datasheet for ABIN1313838

P4HB Protein (AA 1-508) (GST tag)

1 Image

Overview

Quantity:	10 µg
Target:	P4HB
Protein Characteristics:	AA 1-508
Origin:	Human
Source:	Wheat germ
Protein Type:	Recombinant
Purification tag / Conjugate:	This P4HB protein is labelled with GST tag.
Application:	Western Blotting (WB), ELISA, Affinity Purification (AP), Antibody Array (AA)

Product Details

Purpose:	P4HB (Human) Recombinant Protein (P01)
Sequence:	MLRRALLCLA VAALVRADAP EEEDHVLVLR KSNFAEALAA HKYLLVEFYA PWC ₆ GHCKALA PEYAKAAGKL KAEGSEIRLA KVDATEESDL AQQYGV ₆ RGYP TIKFFRNGDT ASPKEYTAGR EADDIVNWLK KRTGPAATTL PDGAAAESLV ESSEVAVIGF FKDVESDSAK QFLQAAEAID DIPFGITSNS DVFSKYQLDK DG ₆ VVLFKKFD EGRNNFEGEV TKENLLDFIK HNQLPLVIEF TEQTAPKIFG GEIKTHILLF LPKSVSDYDG KLSNFKTAAE SFK ₆ GKILFIF IDSDHTDNQR ILEFFGLKKE ECPAVRLITL EEEMTKYKPE SEELTAERIT EFCHRFLE ₆ GK IKPHLMSQEL PEDWDKQPVK VLVGKNFEDV AFDEKKNVFV EFYAPWCGHC KQLAPIWDKL GETYKD ₆ HENI VIAKMDSTAN EVEAVKVHSF PTLKFFPASA DRTVIDYNGE RTLDGFKKFL ESGGQDGAGD DDDLEDLEEA EEPDMEEDDD QKAVKDEL
Characteristics:	Human P4HB full-length ORF (NP_000909.2, 1 a.a. - 508 a.a.) recombinant protein with GST-tag at N-terminal.

Product Details

Purification: in vitro wheat germ expression system

Target Details

Target: P4HB

Alternative Name: P4HB ([P4HB Products](#))

Background: Full Gene Name: prolyl 4-hydroxylase, beta polypeptide
Synonyms: DSI,ERBA2L,GIT,P4Hbeta,PDI,PDIA1,PHDB,PO4DB,PO4HB,PROHB

Gene ID: 5034

NCBI Accession: [NM_000918](#)

Pathways: [Maintenance of Protein Location](#), [Cell RedoxHomeostasis](#), [Lipid Metabolism](#)

Application Details

Application Notes: Optimal working dilution should be determined by the investigator.

Comment: Preparation method: in vitro, wheat germ expression system
Product Quality tested by: 12.5% SDS-PAGE Stained with Coomassie Blue.

Restrictions: For Research Use only

Handling

Buffer: 50 mM Tris-HCl, 10 mM reduced Glutathione, pH =8.0 in the elution buffer.

Handling Advice: Aliquot to avoid repeated freezing and thawing.

Storage: -80 °C

Storage Comment: Best use within three months from the date of receipt of this protein.

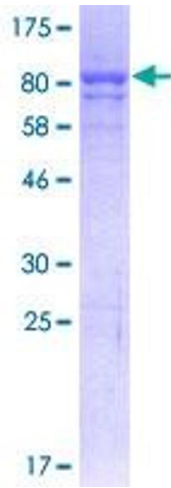


Image 1.