

Datasheet for ABIN1313846
PA2G4 Protein (AA 1-110) (GST tag)



[Go to Product page](#)

1 Image

Overview

Quantity:	10 µg
Target:	PA2G4
Protein Characteristics:	AA 1-110
Origin:	Human
Source:	Wheat germ
Protein Type:	Recombinant
Purification tag / Conjugate:	This PA2G4 protein is labelled with GST tag.
Application:	Western Blotting (WB), ELISA, Affinity Purification (AP), Antibody Array (AA)

Product Details

Purpose:	PA2G4 (Human) Recombinant Protein (Q01)
Sequence:	MSGEDEQQEQ TIAEDLVVTK YKMGGDIANR VLRSLEVEASS SGVSVLSLCE KGDAMIMEET GKIFKKEKEM KKGIAFPTSI SVNNVCVCHFS PLKSDQDYIL KEGDLVKIDL
Characteristics:	Human PA2G4 partial ORF (AAH01951, 1 a.a. - 110 a.a.) recombinant protein with GST-tag at N-terminal.
Purification:	in vitro wheat germ expression system

Target Details

Target:	PA2G4
Alternative Name:	PA2G4 (PA2G4 Products)

Target Details

Background:	Full Gene Name: proliferation-associated 2G4, 38 kDa Synonyms: EBP1,HG4-1,p38-2G4
Gene ID:	5036
Pathways:	Myometrial Relaxation and Contraction , Regulation of Carbohydrate Metabolic Process , Hepatitis C , Toll-Like Receptors Cascades

Application Details

Application Notes:	Optimal working dilution should be determined by the investigator.
Comment:	Preparation method: in vitro, wheat germ expression system Product Quality tested by: 12.5% SDS-PAGE Stained with Coomassie Blue.
Restrictions:	For Research Use only

Handling

Buffer:	50 mM Tris-HCl, 10 mM reduced Glutathione, pH =8.0 in the elution buffer.
Handling Advice:	Aliquot to avoid repeated freezing and thawing.
Storage:	-80 °C
Storage Comment:	Best use within three months from the date of receipt of this protein.

Images

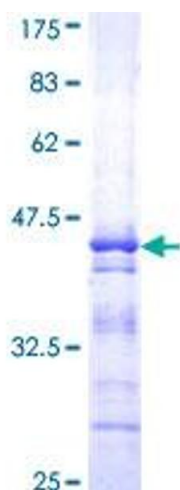


Image 1.