



[Go to Product page](#)

Datasheet for ABIN1313861

## PACRGL Protein (AA 1-221) (GST tag)

### 1 Image

#### Overview

|                               |   |
|-------------------------------|---|
| Quantity:                     | 25 µg   |
| Target:                       | PACRGL  |
| Protein Characteristics:      | AA 1-221  |
| Origin:                       | Human   |
| Source:                       | Wheat germ  |
| Protein Type:                 | Recombinant   |
| Purification tag / Conjugate: | This PACRGL protein is labelled with GST tag.                                 |
| Application:                  | ELISA, Western Blotting (WB), Affinity Purification (AP), Antibody Array (AA) |

#### Product Details

|                  |   |
|------------------|---|
| Purpose:         | C4orf28 (Human) Recombinant Protein (P01)   |
| Sequence:        | <p>MQKSEGGGT QLKNRATGNY DQRTSSSTQL KHRNAVQGSK SSLSTSSPES ARKLHPRPSD<br/>KLNPKTINPF GEQSRVPSAF AAIYSKGGIP CRLVHGSKV KH RLQWECPPES LSFDP LLITL<br/>AEGLRETKHP YTFVSKEGFR ELLLVKGAPE KAIPLLPRLI PVLKAALVHS DDEVFERGLN<br/>ALVQLSVVVG PSLNDHLKHL LTSGSLSIK SKIPTYCSIC C</p> |
| Characteristics: | Human C4orf28 full-length ORF ( NP_659485.1, 1 a.a. - 221 a.a.) recombinant protein with GST-tag at N-terminal.   |
| Purification:    | in vitro wheat germ expression system   |

#### Target Details

|         |        |
|---------|--------|
| Target: | PACRGL |
|---------|--------|

## Target Details

|                   |   |
|-------------------|---|
| Alternative Name: | PACRGL ( <a href="#">PACRGL Products</a> )                            |
| Background:       | Full Gene Name: PARK2 co-regulated-like<br>Synonyms: C4orf28,MGC29898 |
| Gene ID:          | 133015  |
| NCBI Accession:   | <a href="#">NM_145048</a>   |

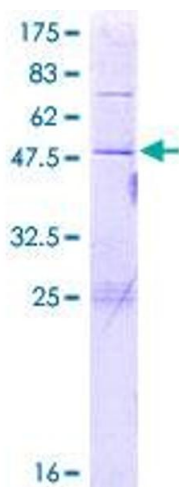
## Application Details

|                    |  |
|--------------------|--|
| Application Notes: | Optimal working dilution should be determined by the investigator.   |
| Comment:           | Preparation method: in vitro, wheat germ expression system<br>Product Quality tested by: 12.5% SDS-PAGE Stained with Coomassie Blue. |
| Restrictions:      | For Research Use only  |

## Handling

|                  |   |
|------------------|---|
| Buffer:          | 50 mM Tris-HCl, 10 mM reduced Glutathione, pH =8.0 in the elution buffer. |
| Handling Advice: | Aliquot to avoid repeated freezing and thawing.                           |
| Storage:         | -80 °C  |
| Storage Comment: | Best use within three months from the date of receipt of this protein.    |

## Images



**Image 1.**