

Datasheet for ABIN1313862  
**PACS2 Protein (AA 1-889) (GST tag)**



[Go to Product page](#)

1 Image

### Overview

Quantity:	10 µg
Target:	PACS2
Protein Characteristics:	AA 1-889
Origin:	Human
Source:	Wheat germ
Protein Type:	Recombinant
Purification tag / Conjugate:	This PACS2 protein is labelled with GST tag.
Application:	Western Blotting (WB), ELISA, Affinity Purification (AP), Antibody Array (AA)

### Product Details

Purpose:	PACS2 (Human) Recombinant Protein (P01)
Sequence:	MAERGRLGLP GAPGALNTPV PMNLFATWEV DGSSPSCVPR LCSLTLKKLV VFKELEKELI SVVIAVKMQG SKRILRSHEI VLPPSGQVET DLALTFSLQY PHFLKREGNK LQIMLQRRKR YKNRTILGYK TLAAGSISMA EVMQHPSEGG QVLSLCSSIK EAPVKAADIW IASLSSQPID HEDSTMQAGP KAKSTDNYSE EEYESFSSEQ EASDDAVQGQ DLDEDDFDVG KPKKQRRSIV RTTSMTRQQN FKQKVALLR RFKVSGEVLD SEQDPAEHIP EAEEDLDLLY DTLDMEHPSD SGPDMEDDDS VLSTPKPKLR PYFEGLSHSS SQTEIGSIHS ARSHKEPPSP ADVPEKTRSL GGRQPSDSVS DTVALGVPGP REHPGQPEDS PEAFASTLDV FTERLPSSGR ITKTESLVIP STRSEGKQAG RRRGRSTSLKE RQAARPQNER ANSLDNERCP DARSQLQIHR KTVYDQLNDI LISDDQLPEN IILVNTSDWQ GQFLSDVLQR HTLPVVCTCS PADVQAAFST IVSRIQRYCN CNSQPPTPVK IAVAGAQHYL SAILRLFVEQ LSHKTPDWLG YMRFLVIPLG SHPVARYLGS VDYRYNNFFQ DLAWRDLFNK LEAQSAVQDT PDIVSRITQY IAGANCAHQL PIAEAMLTYS

## Product Details

---

QKSPDEESSQ KFIPFVGVVK VGIVEPSSAT SGDSDDAAPS GSGTLSSTPP SASPAAKEAS  
PTPPSSPSVS GGLSSPSQGV GAELMGLQVD YWTAAQPADR KRDAEKKDLP VTKNTLKCTF  
RSLQVSRGPS SGEAAATPTM SMTVVTKEN KKVMPKKA KDKDVESKSQ CIEGSRIC  
TARQQNMLR VLIDGVECS D VKFFQLAAQW SSHVKHPIC IFGHKATF

Characteristics: Human PACS2 full-length ORF ( AAH50351.2, 1 a.a. - 889 a.a.) recombinant protein with GST-tag at N-terminal.

Purification: in vitro wheat germ expression system

## Target Details

---

Target: PACS2

Alternative Name: PACS2 ([PACS2 Products](#))

Background: Full Gene Name: phosphofurin acidic cluster sorting protein 2  
Synonyms: FLJ25488,KIAA0602,PACS1L

Gene ID: 23241

## Application Details

---

Application Notes: Optimal working dilution should be determined by the investigator.

Comment: Preparation method: in vitro, wheat germ expression system  
Product Quality tested by: 12.5% SDS-PAGE Stained with Coomassie Blue.

Restrictions: For Research Use only

## Handling

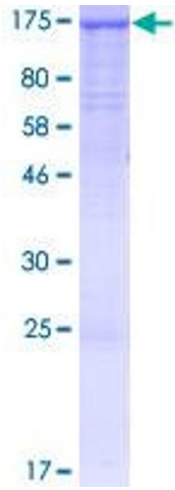
---

Buffer: 50 mM Tris-HCl, 10 mM reduced Glutathione, pH =8.0 in the elution buffer.

Handling Advice: Aliquot to avoid repeated freezing and thawing.

Storage: -80 °C

Storage Comment: Best use within three months from the date of receipt of this protein.



**Image 1.**