

Datasheet for ABIN1313873
PADI1 Protein (AA 1-100) (GST tag)



[Go to Product page](#)

1 Image

Overview

Quantity:	10 µg
Target:	PADI1
Protein Characteristics:	AA 1-100
Origin:	Human
Source:	Wheat germ
Protein Type:	Recombinant
Purification tag / Conjugate:	This PADI1 protein is labelled with GST tag.
Application:	Western Blotting (WB), ELISA, Affinity Purification (AP), Antibody Array (AA)

Product Details

Purpose:	PADI1 (Human) Recombinant Protein (Q01)
Sequence:	MAPKRVVQLS LKMPHAVCV VGVEAHVDIH SDVPGKANSF RVSGSSGVEV FMVYNRTRVK EPIGKARWPL DTDADMVSV GTASKELKDF KVRVSYFGEQ
Characteristics:	Human PADI1 partial ORF (NP_037490.1, 1 a.a. - 100 a.a.) recombinant protein with GST-tag at N-terminal.
Purification:	in vitro wheat germ expression system

Target Details

Target:	PADI1
Alternative Name:	PADI1 (PADI1 Products)

Target Details

Background: Full Gene Name: peptidyl arginine deiminase, type I
Synonyms: HPAD10,PAD1,PDI,PDI1

Gene ID: 29943

NCBI Accession: [NM_013358](#)

Application Details

Application Notes: Optimal working dilution should be determined by the investigator.

Comment: Preparation method: in vitro, wheat germ expression system
Product Quality tested by: 12.5% SDS-PAGE Stained with Coomassie Blue.

Restrictions: For Research Use only

Handling

Buffer: 50 mM Tris-HCl, 10 mM reduced Glutathione, pH =8.0 in the elution buffer.

Handling Advice: Aliquot to avoid repeated freezing and thawing.

Storage: -80 °C

Storage Comment: Best use within three months from the date of receipt of this protein.

Images

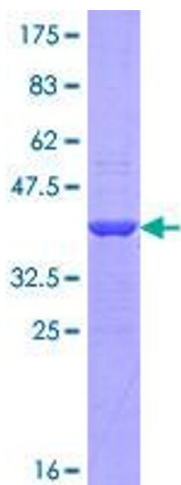


Image 1.