



[Go to Product page](#)

Datasheet for ABIN1313895

## PAFAH1B2 Protein (AA 1-229) (GST tag)

### 1 Image

#### Overview

Quantity:	10 µg
Target:	PAFAH1B2
Protein Characteristics:	AA 1-229
Origin:	Human
Source:	Wheat germ
Protein Type:	Recombinant
Purification tag / Conjugate:	This PAFAH1B2 protein is labelled with GST tag.
Application:	ELISA, Western Blotting (WB), Affinity Purification (AP), Antibody Array (AA)

#### Product Details

Purpose:	PAFAH1B2 (Human) Recombinant Protein (P01)
Sequence:	MSQGDSNPAA IPHAAEDIQG DDRWMSQHNR FVLDCCKDEP DVLFVGDMSV QLMQYEIWR ELFSPHALN FGIGGDTTRH VLWRLKNGEL ENIKPKVIVV WVGTTNNHENT AEEVAGGIEA IVQLINTRQP QAKIIVLGLL PRGEKPNPLR QKNAKVNQLL KVSPLKLANV QLLDTDGGFV HSDGAISCHD MFDLHLTGG GYAKICKPLH ELIMQLEET PEEKQTIA
Characteristics:	Human PAFAH1B2 full-length ORF ( AAH00398, 1 a.a. - 229 a.a.) recombinant protein with GST-tag at N-terminal.
Purification:	in vitro wheat germ expression system

#### Target Details

Target:	PAFAH1B2
---------	----------

## Target Details

Alternative Name:	PAFAH1B2 ( <a href="#">PAFAH1B2 Products</a> )
Background:	Full Gene Name: platelet-activating factor acetylhydrolase, isoform Ib, beta subunit 30 kDa Synonyms:
Gene ID:	5049

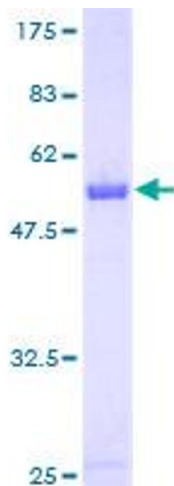
## Application Details

Application Notes:	Optimal working dilution should be determined by the investigator.
Comment:	Preparation method: in vitro, wheat germ expression system Product Quality tested by: 12.5% SDS-PAGE Stained with Coomassie Blue.
Restrictions:	For Research Use only

## Handling

Buffer:	50 mM Tris-HCl, 10 mM reduced Glutathione, pH =8.0 in the elution buffer.
Handling Advice:	Aliquot to avoid repeated freezing and thawing.
Storage:	-80 °C
Storage Comment:	Best use within three months from the date of receipt of this protein.

## Images



**Image 1.**