



[Go to Product page](#)

Datasheet for ABIN1313903

PAGE1 Protein (AA 1-146) (GST tag)

1 Image

Overview

Quantity:	10 µg
Target:	PAGE1
Protein Characteristics:	AA 1-146
Origin:	Human
Source:	Wheat germ
Protein Type:	Recombinant
Purification tag / Conjugate:	This PAGE1 protein is labelled with GST tag.
Application:	ELISA, Western Blotting (WB), Affinity Purification (AP), Antibody Array (AA)

Product Details

Purpose:	PAGE1 (Human) Recombinant Protein (P01)
Sequence:	MGFLRRLIYR RRPMIYVESS EESSDEQPDE VESPTQSQDS TPAEEREDEG ASAAQGQEPE ADSQELVQPK TGCELGDGPD TKRVCLRNEE QMKLPAEGPE PEADSQEQVH PKTGCERGDG PDVQELGLPN PEEVKTPPEED EGQSQP
Characteristics:	Human PAGE1 full-length ORF (NP_003776.2, 1 a.a. - 146 a.a.) recombinant protein with GST-tag at N-terminal.
Purification:	in vitro wheat germ expression system

Target Details

Target:	PAGE1
Alternative Name:	PAGE1 (PAGE1 Products)

Target Details

Background:	Full Gene Name: P antigen family, member 1 (prostate associated) Synonyms: GAGE-9,GAGEB1,PAGE-1
Gene ID:	8712
NCBI Accession:	NM_003785

Application Details

Application Notes:	Optimal working dilution should be determined by the investigator.
Comment:	Preparation method: in vitro, wheat germ expression system Product Quality tested by: 12.5% SDS-PAGE Stained with Coomassie Blue.
Restrictions:	For Research Use only

Handling

Buffer:	50 mM Tris-HCl, 10 mM reduced Glutathione, pH =8.0 in the elution buffer.
Handling Advice:	Aliquot to avoid repeated freezing and thawing.
Storage:	-80 °C
Storage Comment:	Best use within three months from the date of receipt of this protein.

Images

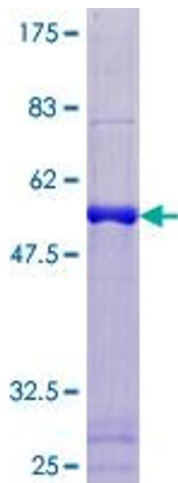


Image 1.