



[Go to Product page](#)

Datasheet for ABIN1313922

PAK1IP1 Protein (AA 1-392) (GST tag)

1 Image

Overview

Quantity:	25 µg
Target:	PAK1IP1
Protein Characteristics:	AA 1-392
Origin:	Human
Source:	Wheat germ
Protein Type:	Recombinant
Purification tag / Conjugate:	This PAK1IP1 protein is labelled with GST tag.
Application:	ELISA, Western Blotting (WB), Affinity Purification (AP), Antibody Array (AA)

Product Details

Purpose:	PAK1IP1 (Human) Recombinant Protein (P01)
Sequence:	MELVAGCYEQ VLFGFAVHPE PEACGDHEQW TLVADFTTHA HTASLSAVAV NSRFVVTGSK DETIIHYDMK KKIEHGALVH HSGTITCLKF YGNRHLSGA EDGLICIWDA KKWECLKSIK AHKGQVTFLS IHPSGKLALS VGTDKTLRTW NLVEGRSAFI KNIKQNAHIV EWSPRGEQYV VIIQNKIDIY QLDTASISGT VTNEKRISV KFLSESVLAV AGDEEVIRFF DCDSLVCLE FKAHENRVKD MFSFEIPEHH VIVSASSDGF IKMWKLEQDK KVPPSLLCEI NTNARLTCLG VWLDKVVADMK ESLPPAAEPS PVSKEQSKIG KKEPGDTVHK EEKRSKPNTK KRGLTGDSKK ATKESGLIST KKRKMVEMLE KKRKKKKIKT MQ
Characteristics:	Human PAK1IP1 full-length ORF (AAH10907.1, 1 a.a. - 392 a.a.) recombinant protein with GST-tag at N-terminal.
Purification:	in vitro wheat germ expression system

Target Details

Target:	PAK1IP1
Alternative Name:	PAK1IP1 (PAK1IP1 Products)
Background:	Full Gene Name: PAK1 interacting protein 1 Synonyms: FLJ20624,MAK11,PIP1,RP11-421M1.5,WDR84,bA421M1.5,hPIP1
Gene ID:	55003
Pathways:	Telomere Maintenance

Application Details

Application Notes:	Optimal working dilution should be determined by the investigator.
Comment:	Preparation method: in vitro, wheat germ expression system Product Quality tested by: 12.5% SDS-PAGE Stained with Coomassie Blue.
Restrictions:	For Research Use only

Handling

Buffer:	50 mM Tris-HCl, 10 mM reduced Glutathione, pH =8.0 in the elution buffer.
Handling Advice:	Aliquot to avoid repeated freezing and thawing.
Storage:	-80 °C
Storage Comment:	Best use within three months from the date of receipt of this protein.

Images

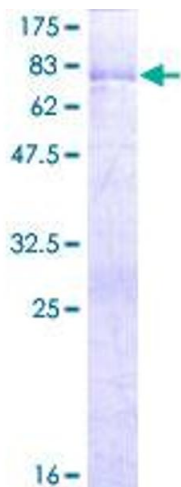


Image 1.