



[Go to Product page](#)

Datasheet for ABIN1313969

PAPD5 Protein (AA 1-442) (GST tag)

1 Image

Overview

Quantity:	25 µg
Target:	PAPD5
Protein Characteristics:	AA 1-442
Origin:	Human
Source:	Wheat germ
Protein Type:	Recombinant
Purification tag / Conjugate:	This PAPD5 protein is labelled with GST tag.
Application:	ELISA, Western Blotting (WB), Antibody Array (AA), Affinity Purification (AP)

Product Details

Purpose:	PAPD5 (Human) Recombinant Protein (P01)
Sequence:	<p>MSPRPEEEKM RMEVNVNRIES VIKELWPSAD VQIFGSFKTG LYLPTSDIDL VVFGKWENLP LWTL EEALRK HKVADEDSVK VLDKATVP II KL TDSFTEVK VDISFNVQNG VRAADLIKDF TKKYPVLPYL VLVLKQFLLQ RDLNEVFTGG IGSYSLFLMA VSFLQLHPRE DACIPNTNYG VLLIEFFELY GRHFNYLKTG IRIKDGGSYV AKDEVQKNML DGYRPSMLYI EDPLQPGNDV GRSSYGAMQV KQAFDYAYVV LSHAVSPIAK YYPNNETESI LGRIIRVTDE VATYRDWISK QWGLKNRPEP SCNGPVSSSS ATQSSSSDVD SDATPCKTPK QLLCRPSTGN RVGSQDVSLE SSQAVGKMQS TQTTNTSNST NKSQHG SARL FRSSSKGFQG TTQTSHGSLM TNKQHOGKSN NQYYHGKKRK HKRDAPLS DL CR</p>
Characteristics:	Human PAPD5 full-length ORF (AAI56330.1, 1 a.a. - 442 a.a.) recombinant protein with GST tag at N-terminal.

Product Details

Purification: in vitro wheat germ expression system

Target Details

Target: PAPD5

Alternative Name: PAPD5 ([PAPD5 Products](#))

Background: Gene: PAP associated domain containing 5
Synonyms: FLJ40270, TRF4-2

Gene ID: 64282

Application Details

Application Notes: Optimal working dilution should be determined by the investigator.

Restrictions: For Research Use only

Handling

Buffer: 50 mM Tris-HCl, 10 mM reduced Glutathione, pH =8.0 in the elution buffer.

Handling Advice: Aliquot to avoid repeated freezing and thawing.

Storage: -80 °C

Storage Comment: Best use within three months from the date of receipt of this protein.

Images

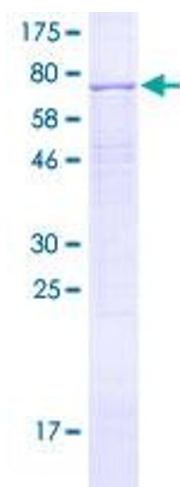


Image 1.