



Datasheet for ABIN1314019
PARN Protein (AA 1-639) (GST tag)



[Go to Product page](#)

1 Image

Overview

Quantity:	10 µg
Target:	PARN
Protein Characteristics:	AA 1-639
Origin:	Human
Source:	Wheat germ
Protein Type:	Recombinant
Purification tag / Conjugate:	This PARN protein is labelled with GST tag.
Application:	Western Blotting (WB), ELISA, Affinity Purification (AP), Antibody Array (AA)

Product Details

Purpose:	PARN (Human) Recombinant Protein (P01)
Sequence:	MEIIRSNFKS NLHKVYQAIE EADFFAIDGE FSGISDGPSV SALTNGFDTP EERYQKLKKH SMDFLLFQFG LCTFKYDYTD SKYITKSFNF YVFPKPFNRS SPDVKFVCQS SSIDFLASQG FDFNKVFRNG IPYLNQEEER QLREQYDEKR SQANGAGALS YVSPNTSKCP VTIPEDQKKF IDQVVEKIED LLQSEENKNL DLEPCTGFQR KLIYQTLNWK YPKGIHVETL ETEKKERYIV ISKVDEEERK RREQQKHAK EELNDAVGF SRVIHAIANS GKL VIGHNML LDVMHTVHQF YCPLPADLSE FKEMTTCVFP RLLDTKLMAS TQPFKDIINN TSLAELEKRL KETPFNPPKV ESAEGFPSYD TASEQLHEAG YDAYITGLCF ISMANYLGSF LSPPKIHVSA RSKLIEPFFN KLFLMRVMDI PYLNLEGPDL QPKRDHVLHV TFPKEWKTSD LYQLFSAFGN IQISWIDDT S AFVLSLQPEQ VKIAVNTSKY AESYRIQTYA EYMGRKQEEK QIKRKWTEDS WKEADSKRLN PQCIPYTLQN HYYRNNSFTA PSTVGKRNLS PSQEEAGLED GVSGEISDTE LEQTDSCAEP LSEGRKKAKK LKRMKKELSP AGSISKNSPA TLFEVPDTW

Product Details

Characteristics:	Human PARN full-length ORF (AAH50029, 1 a.a. - 639 a.a.) recombinant protein with GST-tag at N-terminal.
Purification:	in vitro wheat germ expression system

Target Details

Target:	PARN
Alternative Name:	PARN (PARN Products)
Background:	Full Gene Name: poly(A)-specific ribonuclease (deadenylation nuclease) Synonyms: DAN
Gene ID:	5073

Application Details

Application Notes:	Optimal working dilution should be determined by the investigator.
Comment:	Preparation method: in vitro, wheat germ expression system Product Quality tested by: 12.5% SDS-PAGE Stained with Coomassie Blue.
Restrictions:	For Research Use only

Handling

Buffer:	50 mM Tris-HCl, 10 mM reduced Glutathione, pH =8.0 in the elution buffer.
Handling Advice:	Aliquot to avoid repeated freezing and thawing.
Storage:	-80 °C
Storage Comment:	Best use within three months from the date of receipt of this protein.

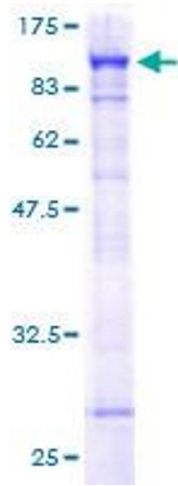


Image 1.