

Datasheet for ABIN1314025

PARP11 Protein (AA 1-331) (GST tag)



[Go to Product page](#)

1 Image

Overview

Quantity:	25 µg
Target:	PARP11
Protein Characteristics:	AA 1-331
Origin:	Human
Source:	Wheat germ
Protein Type:	Recombinant
Purification tag / Conjugate:	This PARP11 protein is labelled with GST tag.
Application:	ELISA, Western Blotting (WB), Affinity Purification (AP), Antibody Array (AA)

Product Details

Purpose:	PARP11 (Human) Recombinant Protein (P01)
Sequence:	MFHKAEEELFS KTTNNEVDDM DTSDTQWGWF YLAECGKWHM FQPDTNSQCS VSSEDIEKSF KTNPCGSISF TTSKFSYKID FAEMKQMMLT TGKQRLIKRA PFSISAFSYI CENEAIMPPP HWENVNTQVP YQLIPLHNQT HEYNEVANLF GKTMDRNRK RIQRIQNLDL WEFFCRKKAQ LKKKRGVPQI NEQMLFHGTS SEFVEAICIH NFDWRINGIH GAVFGKGYF ARDAAYSSRF CKDDIKHGNT FQIHGVSLLQ RHLFRTYKSM FLARVLIGDY INGDSKYMMP PSKDGSYVNL YDSCVDDTWN PKIFVVFAN QIYPEYLIDF H
Characteristics:	Human PARP11 full-length ORF (NP_065100.1, 1 a.a. - 331 a.a.) recombinant protein with GST-tag at N-terminal.
Purification:	in vitro wheat germ expression system

Target Details

Target:	PARP11
Alternative Name:	PARP11 (PARP11 Products)
Background:	Full Gene Name: poly (ADP-ribose) polymerase family, member 11 Synonyms: C12orf6,DKFZp779H0122
Gene ID:	57097
NCBI Accession:	NM_020367

Application Details

Application Notes:	Optimal working dilution should be determined by the investigator.
Comment:	Preparation method: in vitro, wheat germ expression system Product Quality tested by: 12.5% SDS-PAGE Stained with Coomassie Blue.
Restrictions:	For Research Use only

Handling

Buffer:	50 mM Tris-HCl, 10 mM reduced Glutathione, pH =8.0 in the elution buffer.
Handling Advice:	Aliquot to avoid repeated freezing and thawing.
Storage:	-80 °C
Storage Comment:	Best use within three months from the date of receipt of this protein.

Images

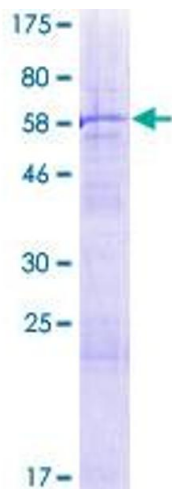


Image 1.