



Datasheet for ABIN1314049
PASD1 Protein (AA 1-773) (GST tag)



[Go to Product page](#)

1 Image

Overview

Quantity:	10 µg
Target:	PASD1
Protein Characteristics:	AA 1-773
Origin:	Human
Source:	Wheat germ
Protein Type:	Recombinant
Purification tag / Conjugate:	This PASD1 protein is labelled with GST tag.
Application:	ELISA, Western Blotting (WB), Affinity Purification (AP), Antibody Array (AA)

Product Details

Purpose:	PASD1 (Human) Recombinant Protein (P01)
Sequence:	<p>MKMRGEKRRD KVNPKSSQRK LNWIPSFPTY DYFNQVTLQL LDGFMITLST DGVIICVAEN ISSLLGHLPA EIVGKKLLSL LPDEEKDEVY QKIILKFPLL NSETHIEFCC HLKRGNVEHG DSSAYENVKF IVNVRDICNE FPVVFSGLF S HLCADFAAC VPQEDRLYL V GNVCILRTQL LQQLYTSKAV SDEAVLTQDS DEEPFVGELS SSQGQRGHTS MKAVYVEPAA AAAAAAISDD QIDIAEVEQY GPQENVHMFV DSDSTYCSST VFLDTMPESP ALSLQDFRGE PEVNPLYRAD PVDLEFSVDQ VDSVDQEGPM DQQDPENPVA PLDQAGLMDP VDPEDSVDLG AAGASAQPLQ PSSPVAYDII SQEELMKKL KEQLEERTWL LHDAIQNQQN ALELMMDHLQ KQPNTLRHVV IPDLQSSEAV PPKQQKQHAG QVKRPLPHPK DVKCFGLSL SNSLKNTGEL QEPCVAFNQQ QLVQQEQHLK EQQRQLREQL QQLREQRKVQ KQKMKMEKKEK LQEKMMEK K LQEQRQK K KKLQERKKWQ GQMLQKEPEE EQQKQLQEQ PLKHNVIVGN ERVQICLQNP RDVSVPLCNH PVRFLQAQPI VPVQRAAEQQ PSGFYQDENC GQQEDESQSF YPEAYQPPPV NQLPLIDTSN</p>

Product Details

SEAISSSSIP QFPITSDSTI STLETPQDYI RLWQELSDSL GPVVQVNTWS CDEQGT LHGQ
PTYHQVQVSE VGVEGPPDPQ AFQGPAAYQP DQMRSAEQTR LMPAEQRDSN KPC

Characteristics: Human PASD1 full-length ORF (AAH40301.1, 1 a.a. - 773 a.a.) recombinant protein with GST-tag at N-terminal.

Purification: in vitro wheat germ expression system

Target Details

Target: PASD1

Alternative Name: PASD1 ([PASD1 Products](#))

Background: Full Gene Name: PAS domain containing 1
Synonyms:

Gene ID: 139135

Application Details

Application Notes: Optimal working dilution should be determined by the investigator.

Comment: Preparation method: in vitro, wheat germ expression system
Product Quality tested by: 12.5% SDS-PAGE Stained with Coomassie Blue.

Restrictions: For Research Use only

Handling

Buffer: 50 mM Tris-HCl, 10 mM reduced Glutathione, pH =8.0 in the elution buffer.

Handling Advice: Aliquot to avoid repeated freezing and thawing.

Storage: -80 °C

Storage Comment: Best use within three months from the date of receipt of this protein.

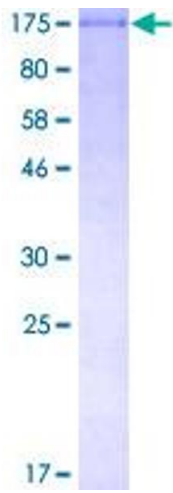


Image 1.