

Datasheet for ABIN1314052  
**PASD1 Protein (AA 1-100) (GST tag)**



[Go to Product page](#)

1 Image

Overview

Quantity:	10 µg
Target:	PASD1
Protein Characteristics:	AA 1-100
Origin:	Human
Source:	Wheat germ
Protein Type:	Recombinant
Purification tag / Conjugate:	This PASD1 protein is labelled with GST tag.
Application:	ELISA, Western Blotting (WB), Affinity Purification (AP), Antibody Array (AA)

Product Details

Purpose:	PASD1 (Human) Recombinant Protein (Q02)
Sequence:	MKMRGEKRRD KVNPKSSQRK LNWIPSFPTY DYFNQVTLQL LDGFMITLST DGVIICVAEN ISSLLGHLPA EIVGKKLLSL LPDEEKDEVY QKIILKFPLL
Characteristics:	Human PASD1 partial ORF ( NP_775764.1, 1 a.a. - 100 a.a.) recombinant protein with GST-tag at N-terminal.
Purification:	in vitro wheat germ expression system

Target Details

Target:	PASD1
Alternative Name:	PASD1 ( <a href="#">PASD1 Products</a> )

## Target Details

Background: Full Gene Name: PAS domain containing 1  
Synonyms:

Gene ID: 139135

NCBI Accession: [NM\\_173493](#)

## Application Details

Application Notes: Optimal working dilution should be determined by the investigator.

Comment: Preparation method: in vitro, wheat germ expression system  
Product Quality tested by: 12.5% SDS-PAGE Stained with Coomassie Blue.

Restrictions: For Research Use only

## Handling

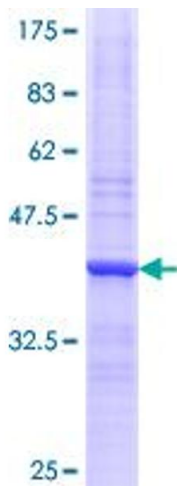
Buffer: 50 mM Tris-HCl, 10 mM reduced Glutathione, pH =8.0 in the elution buffer.

Handling Advice: Aliquot to avoid repeated freezing and thawing.

Storage: -80 °C

Storage Comment: Best use within three months from the date of receipt of this protein.

## Images



**Image 1.**