



[Go to Product page](#)

Datasheet for ABIN1314083

PAX8 Protein (AA 1-450) (GST tag)

1 Image

Overview

Quantity:	10 µg
Target:	PAX8
Protein Characteristics:	AA 1-450
Origin:	Human
Source:	Wheat germ
Protein Type:	Recombinant
Purification tag / Conjugate:	This PAX8 protein is labelled with GST tag.
Application:	Western Blotting (WB), ELISA, Affinity Purification (AP), Antibody Array (AA)

Product Details

Purpose:	PAX8 (Human) Recombinant Protein (P01)
Sequence:	MPHNSIRSGH GGLNQLGGAF VNGRPLPEVW RQRIVDLAHQ GVRPCDISRQ LRVSHGCVSK ILGRYYETGS IRPGVIGGSK PKVATPKVVE KIGDYKRQNP TMFAWEIRD RLLAEGVCDND TVPSVSSINR IIRTKVQQPF NLPMDSCVAT KSLSPGHTLI PSSAVTPPES PQSDSLGSTY SINGLLGIAQ PGSDKRKMDD SDQDSCRLSI DSQSSSSGPR KHLRTDAFSQ HHLEPLECPF ERQHYPEAYA SPSHTKGEQG LYPLLLNST LDDGKATLTP SNTPLGRNLS THQYTPVVAD PHSPFAIKQE TPEVSSSSST PSSLSSSAFL DLQQVGGSGVP PFNAFPHAAS VYQFTGQAL LSGREMVGPT LPGYPPHIPT SGQGSYASSA IAGMVAGSEY SGNAYGHTPY SSYSEAWRFP NSSLLSPYY YSSTSRPSAP PTTATAFDHL
Characteristics:	Human PAX8 full-length ORF (AAH01060, 1 a.a. - 450 a.a.) recombinant protein with GST-tag at N-terminal.

Product Details

Purification: in vitro wheat germ expression system

Target Details

Target: PAX8

Alternative Name: PAX8 ([PAX8 Products](#))

Background: Full Gene Name: paired box 8
Synonyms:

Gene ID: 7849

Pathways: [Thyroid Hormone Synthesis](#), [Regulation of Hormone Metabolic Process](#), [Stem Cell Maintenance](#), [Tube Formation](#)

Application Details

Application Notes: Optimal working dilution should be determined by the investigator.

Comment: Preparation method: in vitro, wheat germ expression system
Product Quality tested by: 12.5% SDS-PAGE Stained with Coomassie Blue.

Restrictions: For Research Use only

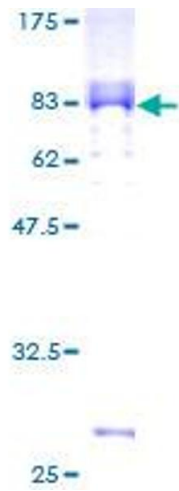
Handling

Buffer: 50 mM Tris-HCl, 10 mM reduced Glutathione, pH =8.0 in the elution buffer.

Handling Advice: Aliquot to avoid repeated freezing and thawing.

Storage: -80 °C

Storage Comment: Best use within three months from the date of receipt of this protein.



SDS-PAGE

Image 1.