



[Go to Product page](#)

Datasheet for ABIN1314085

PAX8 Protein (AA 141-250) (GST tag)

1 Image

Overview

Quantity:	10 µg
Target:	PAX8
Protein Characteristics:	AA 141-250
Origin:	Human
Source:	Wheat germ
Protein Type:	Recombinant
Purification tag / Conjugate:	This PAX8 protein is labelled with GST tag.
Application:	Western Blotting (WB), ELISA, Affinity Purification (AP), Antibody Array (AA)

Product Details

Purpose:	PAX8 (Human) Recombinant Protein (Q01)
Sequence:	NLPMDSCVAT KSLSPGHTLI PSSAVTPPES PQSDSLGSTY SINGLLGIAQ PGSDKRKMDD SDQDSCRLSI DSQSSSSGPR KHLRTDAFSQ HHLEPLECPF ERQHYPEAYA
Characteristics:	Human PAX8 partial ORF (NP_003457.1, 141 a.a. - 250 a.a.) recombinant protein with GST-tag at N-terminal.
Purification:	in vitro wheat germ expression system

Target Details

Target:	PAX8
Alternative Name:	PAX8 (PAX8 Products)

Target Details

Background:	Gene: paired box 8
Gene ID:	7849
NCBI Accession:	NM_003466
Pathways:	Thyroid Hormone Synthesis , Regulation of Hormone Metabolic Process , Stem Cell Maintenance , Tube Formation

Application Details

Application Notes:	Optimal working dilution should be determined by the investigator.
Restrictions:	For Research Use only

Handling

Buffer:	50 mM Tris-HCl, 10 mM reduced Glutathione, pH =8.0 in the elution buffer.
Handling Advice:	Aliquot to avoid repeated freezing and thawing.
Storage:	-80 °C
Storage Comment:	Best use within three months from the date of receipt of this protein.

Images

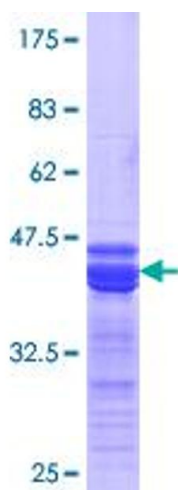


Image 1.