

Datasheet for ABIN1314106  
**PBX1 Protein (AA 213-321) (GST tag)**



[Go to Product page](#)

1 Image

Overview

Quantity:	10 µg
Target:	PBX1
Protein Characteristics:	AA 213-321
Origin:	Human
Source:	Wheat germ
Protein Type:	Recombinant
Purification tag / Conjugate:	This PBX1 protein is labelled with GST tag.
Application:	ELISA, Western Blotting (WB), Affinity Purification (AP), Antibody Array (AA)

Product Details

Purpose:	PBX1 (Human) Recombinant Protein (Q01)
Sequence:	MLKQSTCEA VMILRSRFLD ARRKRRNFNK QATEILNEYF YSHLSNPYPS EEAKEELAKK CGITVSQVSN WFGNKRIRYK KNIGKFQEEA NIYAAKTAVT ATNNSAHGS
Characteristics:	Human PBX1 partial ORF ( NP_002576, 213 a.a. - 321 a.a.) recombinant protein with GST-tag at N-terminal.
Purification:	in vitro wheat germ expression system

Target Details

Target:	PBX1
Alternative Name:	PBX1 ( <a href="#">PBX1 Products</a> )

## Target Details

Background:	Full Gene Name: pre-B-cell leukemia homeobox 1 Synonyms: DKFZp686B09108,MGC126627
Gene ID:	5087
NCBI Accession:	<a href="#">NM_002585</a>

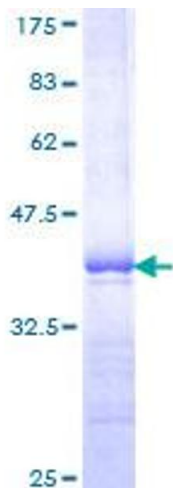
## Application Details

Application Notes:	Optimal working dilution should be determined by the investigator.
Comment:	Preparation method: in vitro, wheat germ expression system Product Quality tested by: 12.5% SDS-PAGE Stained with Coomassie Blue.
Restrictions:	For Research Use only

## Handling

Buffer:	50 mM Tris-HCl, 10 mM reduced Glutathione, pH =8.0 in the elution buffer.
Handling Advice:	Aliquot to avoid repeated freezing and thawing.
Storage:	-80 °C
Storage Comment:	Best use within three months from the date of receipt of this protein.

## Images



**Image 1.**