



[Go to Product page](#)

Datasheet for ABIN1314188

## PCDHa8 Protein (AA 1-814) (GST tag)

### 1 Image

#### Overview

Quantity:	10 µg
Target:	PCDHa8
Protein Characteristics:	AA 1-814
Origin:	Human
Source:	Wheat germ
Protein Type:	Recombinant
Purification tag / Conjugate:	This PCDHa8 protein is labelled with GST tag.
Application:	Western Blotting (WB), ELISA, Affinity Purification (AP), Antibody Array (AA)

#### Product Details

Purpose:	PCDHA8 (Human) Recombinant Protein (P01)
Sequence:	MDYHWRGELG SWRLLLLLLL LAWKVGSQ LHYSVPEEAK HGTFVGRIAQ DLGLELAELV PRLFRVASKR HRDLLEVLQ NGILFVNSRI DREELCGRSA ECSIHLEVIV DRPLQVFHVD VEVKDVNDNP PVFRVKDQKL FVSESMPDS RFPLEGASDA DVGANSVLTY RLSSHDFYFML DVNSKNDENK LEVELVRKSL DREDAPAHHL FLTATDGGKP ELTGTVQLLV TVLDVNDNAP TFEQSEYEVF IFENADNGTT VIKLNASDPD EGANGAISYS FNSLVETMVI DHFSIDRNTG EIVIRGNLDF EQENLYKILI DATDKGHPPM AGHCTVLVRI LDKNDNVPEI ALTSLSLPVR EDAQFGTVIA LISVNDLDSG ANGQVTCSLM PHVPFKLVST FKNYYSVLVD SALDRERVSA YELVVTARDG GSPSLWATAS LSVEADVND NAPAFAQPEY TVFVKENPP GCHIFTVSAR DADAQENALV SYSLVERRVG ERSLSYSISV HTESGKVYAL QPLDHEEEL LQFQVSARDA GVPPLGSNVT LQVFLDEND NAPALLEPRV GGTGGAASKL VPRSVGAGHV VAKVRAVDAD SGYNAWLSYE LQPAASSPRI PFRVGLYTGE ISTTRVLDEA DSPRHRLVL VKDHGEPALT

## Product Details

---

ATATVLVSLV ESGQAPKASS RQSAGVLGPE AALVDVNVYL IIAICAVSSL LVLTLTTYA  
LRCSALPTEG GCRAGKPTLV CSSAVGWSY SQQPQRVCS GEGPPKTDLM AFSPCLPPDL  
GSVDVGEEQD LNVDHGLKVS PFKFRTHKFY LWKL

Characteristics: Human PCDHA8 full-length ORF ( NP\_114062.1, 1 a.a. - 814 a.a.) recombinant protein with GST-tag at N-terminal.

Purification: in vitro wheat germ expression system

## Target Details

---

Target: PCDHa8

Alternative Name: PCDHA8 ([PCDHa8 Products](#))

Background: Full Gene Name: protocadherin alpha 8  
Synonyms: PCDH-ALPHA8

Gene ID: 56140

NCBI Accession: [NM\\_031856](#)

## Application Details

---

Application Notes: Optimal working dilution should be determined by the investigator.

Comment: Preparation method: in vitro, wheat germ expression system  
Product Quality tested by: 12.5% SDS-PAGE Stained with Coomassie Blue.

Restrictions: For Research Use only

## Handling

---

Buffer: 50 mM Tris-HCl, 10 mM reduced Glutathione, pH =8.0 in the elution buffer.

Handling Advice: Aliquot to avoid repeated freezing and thawing.

Storage: -80 °C

Storage Comment: Best use within three months from the date of receipt of this protein.

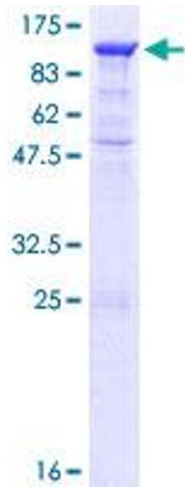


Image 1.