

Datasheet for ABIN1314222

PCDHB6 Protein (AA 1-794) (GST tag)



[Go to Product page](#)

1 Image

Overview

Quantity:	10 µg
Target:	PCDHB6
Protein Characteristics:	AA 1-794
Origin:	Human
Source:	Wheat germ
Protein Type:	Recombinant
Purification tag / Conjugate:	This PCDHB6 protein is labelled with GST tag.
Application:	Western Blotting (WB), ELISA, Affinity Purification (AP), Antibody Array (AA)

Product Details

Purpose:	PCDHB6 (Human) Recombinant Protein (P01)
Sequence:	MMQTKVQNKK RQVAFFILLM LWGEVGSSEI QYSVLEETES GTFVANLTKD LGLRVGELAS RGARVVFKN RQHLQFDPQT HDLLLNEKLD REELCGSTEP CVLPFQVLE NPLQFFQASL RVRDINDHAP EFPAREMLLK ISEITMPGKI FPLKMAHDLD TGSNGLQRYT ISSNPHFHVL TRNRSEGRKF PELVLDKPLD REEQPQLRLT LIALDGGSP RSGTSEIQIQ VLDINDNVPE FAQELYEAQV PENNPLGSLV ITVSARDLDA GSFVKVSYAL FQVDDVNQPF EINAITGEIR LRKALDFEEI QSYDVDVEAT DGGGLSGKCS LVVRVLDVND NAPELTMSFF ISLIPENLPE ITVAVFSVSD ADSGHNQVI CSIENNL PFL LRPSVENFYT LVTEGALDRE SRAEYNITIT VTDLGTPLRK TQQSITVQVS DVNDNVPAFT QTSYTLFVRE NNSPALHIGS VSATDRDSGI NAQVTYSLLP PQDPHPLSS LVSINADNGH LFALRSLDYE ALQSFEFRVG ATDRGSPALS SEALVRLVLV DANDNSPFVL YPLQNGSAPC TELVPRAAEP GYLVTQVAV DGDSGQNAWL SYQLLKATEL GLFGVWAHNG EVRTARLLSE RDAAKHRLVV LVKDNGEPPR SATATLHVLL

Product Details

VDGFSQPYLP LPEAAPAAQADSLTVYLVV ALASVSSLFL FSVLLFVAVR LCRRSRAASV
GRYSVPEGPF PGHLVDVSGT GTLSQSYQYK VCLTGGSETN EFKFLKPIMP NFPPQGTERE
MEETPTSRNS FPFS

Characteristics: Human PCDHB6 full-length ORF (AAI52976.1, 1 a.a. - 794 a.a.) recombinant protein with GST-tag at N-terminal.

Purification: in vitro wheat germ expression system

Target Details

Target: PCDHB6

Alternative Name: PCDHB6 ([PCDHB6 Products](#))

Background: Full Gene Name: protocadherin beta 6
Synonyms: PCDH-BETA6

Gene ID: 56130

Application Details

Application Notes: Optimal working dilution should be determined by the investigator.

Comment: Preparation method: in vitro, wheat germ expression system
Product Quality tested by: 12.5% SDS-PAGE Stained with Coomassie Blue.

Restrictions: For Research Use only

Handling

Buffer: 50 mM Tris-HCl, 10 mM reduced Glutathione, pH =8.0 in the elution buffer.

Handling Advice: Aliquot to avoid repeated freezing and thawing.

Storage: -80 °C

Storage Comment: Best use within three months from the date of receipt of this protein.

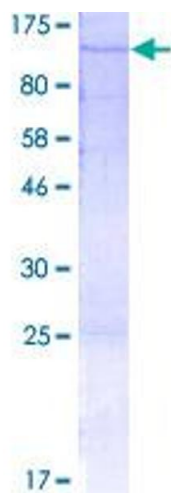


Image 1.