



[Go to Product page](#)

Datasheet for ABIN1314224

PCDHB6 Protein (AA 118-217) (GST tag)

1 Image

Overview

Quantity:	10 µg
Target:	PCDHB6
Protein Characteristics:	AA 118-217
Origin:	Human
Source:	Wheat germ
Protein Type:	Recombinant
Purification tag / Conjugate:	This PCDHB6 protein is labelled with GST tag.
Application:	Western Blotting (WB), ELISA, Affinity Purification (AP), Antibody Array (AA)

Product Details

Purpose:	PCDHB6 (Human) Recombinant Protein (Q01)
Sequence:	ASLRVRDIND HAPEFPAREM LLKISEITMP GKIFPLKMAH DLDTGSNGLQ RYTISSNPHF HVLTRNRSEG RKFPELVLDK PLDREEQPQL RLTLIALDGG
Characteristics:	Human PCDHB6 partial ORF (NP_061762, 118 a.a. - 217 a.a.) recombinant protein with GST-tag at N-terminal.
Purification:	in vitro wheat germ expression system

Target Details

Target:	PCDHB6
Alternative Name:	PCDHB6 (PCDHB6 Products)

Target Details

Background: Full Gene Name: protocadherin beta 6
Synonyms: PCDH-BETA6

Gene ID: 56130

NCBI Accession: [NM_018939](#)

Application Details

Application Notes: Optimal working dilution should be determined by the investigator.

Comment: Preparation method: in vitro, wheat germ expression system
Product Quality tested by: 12.5% SDS-PAGE Stained with Coomassie Blue.

Restrictions: For Research Use only

Handling

Buffer: 50 mM Tris-HCl, 10 mM reduced Glutathione, pH =8.0 in the elution buffer.

Handling Advice: Aliquot to avoid repeated freezing and thawing.

Storage: -80 °C

Storage Comment: Best use within three months from the date of receipt of this protein.

Images

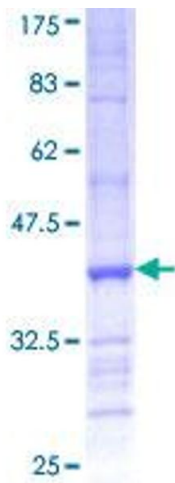


Image 1.