

Datasheet for ABIN1314234

**PCDHgA11 Protein (AA 1-837) (GST tag)**[Go to Product page](#)**1** Image

## Overview

Quantity:	10 µg
Target:	PCDHgA11
Protein Characteristics:	AA 1-837
Origin:	Human
Source:	Wheat germ
Protein Type:	Recombinant
Purification tag / Conjugate:	This PCDHgA11 protein is labelled with GST tag.
Application:	Western Blotting (WB), ELISA, Affinity Purification (AP), Antibody Array (AA)

## Product Details

Purpose:	PCDHGA11 (Human) Recombinant Protein (P01)
Sequence:	MANRLQRGDR SRLLLLLCIF LGTLRGFRAR QIRYSVPEET EKGSFVGNIS KDLGLEPREL AKRGVRIVSR GKTQLFAVNP RSGSLITAGR IDREELCETV SSCFLNMELL VEDTLKIYGV EVEIIDINDN APSFQEDEVE IKVSEHAIPG ARFALPNARD PDVGVNSLQS YQLSPNNYFS LQLRGRTDGA KNPELVLEGS LDREKEAAHL LLLTALDGGD PIRKGAVPIR VVVLVDVNDHI PMFTQSVYRV SVPENISSGT RVLMVNATDP DEGINGEVMY SFRNMESKAS EIFQLDSQTG EVQVRGSLDF EKYRFYEMEI QGQDGGGLFT TTTMLITVVD VNDNAPEITI TSSINSILEN SPPGTVIALL NVQDQDSGEN GQVSCFIPNH LPFKLEKTYG NYYKLITSRV LDRELVQSYN ITLTATDQGS PPLSAETHWW LNVADDNDNP PVFPHSSYSA YIPENNPRGA SIFSVTALDP DSKQNALVTY SLTDDTVQGV PLSSYVSINS NTGVLYALQS FDYEQFRDLE LRVIARDSGD PPLSSNVLSL LFVLDQNDNA PEILYPALPT DGSTGVELAP RSAEPGYLVT KVVAVDKDSG QNAWLSYRLL KASEPGLFAV GEHTGEVRTA RALLDRDALK QSLVVAVQDH GQPPLSATVT

## Product Details

---

LTVAVADSIP EVLADLGSLE SLANSETSDL SLYLVVAVAA VSCIFLVFVI VLLALRLRW  
HKSRLQASE GGLAGMPTSH FVGVDGVQAF LQYSHEVSL IADSQKSHLI FPQPNYGDTL  
ISQESCEKSE PLLIAEDSAI ILGKCDPTSN QVRFISLPPN CWCLGTSLLR RCFLSLL

Characteristics: Human PCDHGA11 full-length ORF ( NP\_114480.1, 1 a.a. - 837 a.a.) recombinant protein with GST-tag at N-terminal.

Purification: in vitro wheat germ expression system

## Target Details

---

Target: PCDHgA11

Alternative Name: PCDHGA11 ([PCDHgA11 Products](#))

Background: Full Gene Name: protocadherin gamma subfamily A, 11  
Synonyms: PCDH-GAMMA-A11

Gene ID: 56105

NCBI Accession: [NM\\_032091](#)

## Application Details

---

Application Notes: Optimal working dilution should be determined by the investigator.

Comment: Preparation method: in vitro, wheat germ expression system  
Product Quality tested by: 12.5% SDS-PAGE Stained with Coomassie Blue.

Restrictions: For Research Use only

## Handling

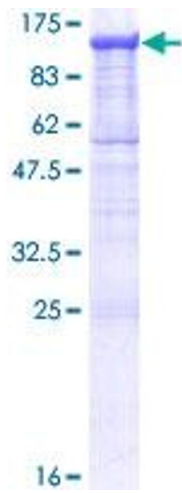
---

Buffer: 50 mM Tris-HCl, 10 mM reduced Glutathione, pH =8.0 in the elution buffer.

Handling Advice: Aliquot to avoid repeated freezing and thawing.

Storage: -80 °C

Storage Comment: Best use within three months from the date of receipt of this protein.



**Image 1.**