



[Go to Product page](#)

Datasheet for ABIN1314236

## PCDHGA12 Protein (AA 1-932) (GST tag)

### 1 Image

#### Overview

Quantity:	10 µg
Target:	PCDHGA12
Protein Characteristics:	AA 1-932
Origin:	Human
Source:	Wheat germ
Protein Type:	Recombinant
Purification tag / Conjugate:	This PCDHGA12 protein is labelled with GST tag.
Application:	ELISA, Western Blotting (WB), Affinity Purification (AP), Antibody Array (AA)

#### Product Details

Purpose:	PCDHGA12 (Human) Recombinant Protein (P01)
Sequence:	<p>MIPARLHRDY KGLVLLGILL GTLWETGCTQ IRYSVPEELE KGSRVGDISR DLGLEPRELA                      ERGVRIIPRG RTQLFALNPR SGSLVTAGRI DREELCMGAI KCQLNLDILM EDKVKIYGVE                      VEVRDINDNA PYFRESELEI KISENAATEM RFPLPHAWDP DIGKNSLQSY ELSPNTHFSL                      IVQNGADGSK YPELVLKRAL DREEKAAHHL VLTASDGGDP VRTGTARIRV MVL DANDNAP                      AFAQPEYRAS VPENLALGTQ LLVVNATDPD EGVNAEVRYS FRYVDDKAAQ VFKLDCNSGT                      ISTIGELDHE ESGFYQMEVQ AMDNAGYSAR AKVLITVLDV NDNAPEVVLT SLASSVPENS                      PRGTLIALLN VNDQDSEENG QVICFIQGNL PFKLEKSYGN YYSLVTDIVL DREQVPSYNI                      TVTATDRGTP PLSTETHISL NVADTNDNPP VFPQASYSAY IPENNPRGVS LSVTAHDPD                      CEENAQITYS LAENTIQGAS LSSYVSINS D TGVLALSSF DYEQFRDLQV KVMARDNGHP                      PLSSNVLSL FVLDQNDNAP EILYPALPTD GSTGVELAPR SAEPGYLVTK VVAVDRDSGQ                      NAWLSYRLLK ASEPGLFSVG LHTGEVRTAR ALLDRDALKQ SLVVAVQDHG QPPLSATVTL</p>

## Product Details

---

TVAVADSIPQ VLADLGSLES PANSETSDLT LYLWVAVAAV SCVFLAFVIL LLALRLRRWH  
KSRLQASGG GLTGAPASHF VGVDGVQAFQ QTYSHEVSLT TDSRKSHLIF PQQNYADMLV  
SQESFEKSEP LLLSGDSVFS KDSHGLIEQA PPNTDWRFSQ AQRPGTSGSQ NGDDTGTWPN  
NQFDTEMLQA MILASASEAA DGSSTLGGGA GTMGLSARYG PQFTLQHVPD YRQNVYIPGS  
NATLTNAAGK RDGKAPAGGN GNKKKSGKKE KK

Characteristics: Human PCDHGA12 full-length ORF ( NP\_003726.1, 1 a.a. - 932 a.a.) recombinant protein with GST-tag at N-terminal.

Purification: in vitro wheat germ expression system

## Target Details

---

Target: PCDHGA12

Alternative Name: PCDHGA12 ([PCDHGA12 Products](#))

Background: Full Gene Name: protocadherin gamma subfamily A, 12  
Synonyms: CDH21,FIB3,KIAA0588,PCDH-GAMMA-A12

Gene ID: 26025

NCBI Accession: [NM\\_003735](#)

## Application Details

---

Application Notes: Optimal working dilution should be determined by the investigator.

Comment: Preparation method: in vitro, wheat germ expression system  
Product Quality tested by: 12.5% SDS-PAGE Stained with Coomassie Blue.

Restrictions: For Research Use only

## Handling

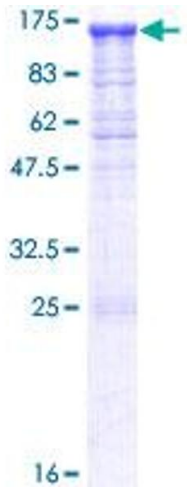
---

Buffer: 50 mM Tris-HCl, 10 mM reduced Glutathione, pH =8.0 in the elution buffer.

Handling Advice: Aliquot to avoid repeated freezing and thawing.

Storage: -80 °C

Storage Comment: Best use within three months from the date of receipt of this protein.



**Image 1.**