

Datasheet for ABIN1314312  
**PCID2 Protein (AA 1-399) (GST tag)**



[Go to Product page](#)

1 Image

## Overview

Quantity:	10 µg
Target:	PCID2
Protein Characteristics:	AA 1-399
Origin:	Human
Source:	Wheat germ
Protein Type:	Recombinant
Purification tag / Conjugate:	This PCID2 protein is labelled with GST tag.
Application:	ELISA, Western Blotting (WB), Affinity Purification (AP), Antibody Array (AA)

## Product Details

Purpose:	FLJ11305 (Human) Recombinant Protein (P01)
Sequence:	MAHITINQYL QQVYEAIIDSR DGASCAELVS FKHPHVANPR LQMASPEEKC QQVLEPPYDE MFAAHLRCTY AVGNHDFIEA YKCQTVIVQS FLRAFQAHKE ENWALPVMYA VALDLRVFAN NADQQLVKKG KSKVGDMLEK AAELLMSCFR VCASDTRAGI EDSKKWGMLF LVNQLLKIYF KINKLHLCKP LIRAIDSSNL KDDYSTAQRV TYKYYVGRKA MFDSDFKQAE EYLSFAFEHC HRSSQKNKRM ILIYLLPVKM LLGHMPTVEL LKKYHLMQFA EVTRAVSEGN LLLLHEALAK HEAFFIRCGI FLILEKLIKII TYRNLFKKVY LLLKTHQLSL DAFLVALKFM QVEDVDIDEV QCILANLIYM GHVKG YVSHQ HQKLVVSKQN PFPPLSTVC
Characteristics:	Human FLJ11305 full-length ORF ( AAH16614, 1 a.a. - 399 a.a.) recombinant protein with GST-tag at N-terminal.
Purification:	in vitro wheat germ expression system

## Target Details

Target:	PCID2
Alternative Name:	PCID2 ( <a href="#">PCID2 Products</a> )
Background:	Full Gene Name: PCI domain containing 2 Synonyms: DKFZp686C20226,F10,FLJ11305,FLJ99362,MGC16774
Gene ID:	55795

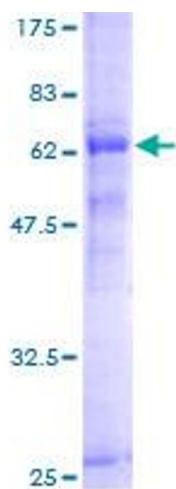
## Application Details

Application Notes:	Optimal working dilution should be determined by the investigator.
Comment:	Preparation method: in vitro, wheat germ expression system Product Quality tested by: 12.5% SDS-PAGE Stained with Coomassie Blue.
Restrictions:	For Research Use only

## Handling

Buffer:	50 mM Tris-HCl, 10 mM reduced Glutathione, pH =8.0 in the elution buffer.
Handling Advice:	Aliquot to avoid repeated freezing and thawing.
Storage:	-80 °C
Storage Comment:	Best use within three months from the date of receipt of this protein.

## Images



**Image 1.**