



[Go to Product page](#)

Datasheet for ABIN1314320

PCLO Protein (AA 1-356) (GST tag)

1 Image

Overview

Quantity:	10 µg
Target:	PCLO
Protein Characteristics:	AA 1-356
Origin:	Human
Source:	Wheat germ
Protein Type:	Recombinant
Purification tag / Conjugate:	This PCLO protein is labelled with GST tag.
Application:	Affinity Purification (AP), Antibody Array (AA), ELISA, Western Blotting (WB)

Product Details

Purpose:	PCLO (Human) Recombinant Protein (P01)
Sequence:	MKKFRVSLVS KVGKQKYVDL NMLSDSENSQ HLELHEPPKA VDKAKSPGVD PKQLAAELQK VSLQQSPLVL SSVVEKGSHV HSGPTSAGSS SVPSPGQPGS PSVSKKKHGS SKPTDGTKVV SHPITGEIQL QINYDLGNLI IHILQARNLV PRDNNGYSDP FVKVYLLPGR GAEYKRRTKH VQKSLNPEWN QTVIYKSISM EQLKKKTLEV TVWDYDRFSS NDFLGEVLID LSSTAHLDNT PRWYPLKEQT ESIDHGKSHS SQSSQSPKP SVIKSRSHGI FPDPSKDMQV PTIEKSHSSP GSSKSSSEGH LRSHGPPSRQ SKTSVTQTHL EDAGAAIAAA EAAVQQLRIQ PSKRRK
Characteristics:	Human PCLO full-length ORF (AAH01304.2, 1 a.a. - 356 a.a.) recombinant protein with GST-tag at N-terminal.
Purification:	in vitro wheat germ expression system

Target Details

Target:	PCLO
Alternative Name:	PCLO (PCLO Products)
Background:	Full Gene Name: piccolo (presynaptic cytomatrix protein) Synonyms: ACZ,DKFZp779G1236
Gene ID:	27445
Pathways:	Hormone Transport , Synaptic Vesicle Exocytosis

Application Details

Application Notes:	Optimal working dilution should be determined by the investigator.
Comment:	Preparation method: in vitro, wheat germ expression system Product Quality tested by: 12.5% SDS-PAGE Stained with Coomassie Blue.
Restrictions:	For Research Use only

Handling

Buffer:	50 mM Tris-HCl, 10 mM reduced Glutathione, pH =8.0 in the elution buffer.
Handling Advice:	Aliquot to avoid repeated freezing and thawing.
Storage:	-80 °C
Storage Comment:	Best use within three months from the date of receipt of this protein.

Images

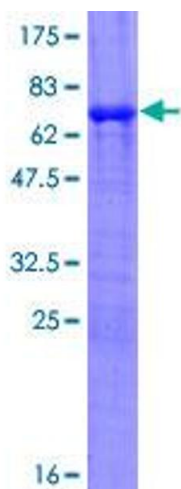


Image 1.