

Datasheet for ABIN1314328  
**PCMTD1 Protein (AA 1-357) (GST tag)**



[Go to Product page](#)

1 Image

Overview

Quantity:	10 µg
Target:	PCMTD1
Protein Characteristics:	AA 1-357
Origin:	Human
Source:	Wheat germ
Protein Type:	Recombinant
Purification tag / Conjugate:	This PCMTD1 protein is labelled with GST tag.
Application:	ELISA, Western Blotting (WB), Affinity Purification (AP), Antibody Array (AA)

Product Details

Purpose:	PCMTD1 (Human) Recombinant Protein (P01)
Sequence:	MGGAVSAGED NDDLIDNLKE AQYIRTERVE QAFRAIDRGD YYLEGYRDNA YKDLAWKHGN IHLSAPCIYS EVMEALKLQP GLSFLNLGSG TGYLSTMVGL ILGPFGINHG IELHSDVVEY AKEKLESFIK NSDSFDKFEF CEPAFVVGNC LQIASDSHQY DRIYCGAGVQ KDHENYMKIL LKVGILVMP IEDQLTQIMR TGQNTWESKN ILAVSFAPLV QPSKNDNGKP DSVGLPPCAV RNLQDLARIY IRRTLRNFN DEMQAKGIPQ RAPPKRKRKR VKQRINTYVF VGNQLIPQPL DSEEDEKMEE DIKEEEEKDH NEAMKPEEPP QNLLREKIMK LPLPELTKAY LTYFRDK
Characteristics:	Human PCMTD1 full-length ORF ( NP_443169.1, 1 a.a. - 357 a.a.) recombinant protein with GST-tag at N-terminal.
Purification:	in vitro wheat germ expression system

## Target Details

Target:	PCMTD1
Alternative Name:	PCMTD1 ( <a href="#">PCMTD1 Products</a> )
Background:	Full Gene Name: protein-L-isoaspartate (D-aspartate) O-methyltransferase domain containing 1 Synonyms: FLJ10883
Gene ID:	115294
NCBI Accession:	<a href="#">NM_052937</a>

## Application Details

Application Notes:	Optimal working dilution should be determined by the investigator.
Comment:	Preparation method: in vitro, wheat germ expression system Product Quality tested by: 12.5% SDS-PAGE Stained with Coomassie Blue.
Restrictions:	For Research Use only

## Handling

Buffer:	50 mM Tris-HCl, 10 mM reduced Glutathione, pH =8.0 in the elution buffer.
Handling Advice:	Aliquot to avoid repeated freezing and thawing.
Storage:	-80 °C
Storage Comment:	Best use within three months from the date of receipt of this protein.

## Images

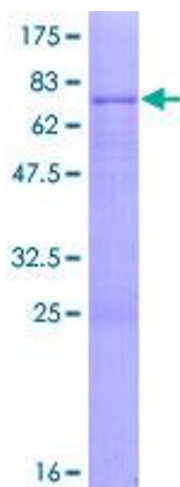


Image 1.