



[Go to Product page](#)

Datasheet for ABIN1314330  
**PCMTD2 Protein (AA 1-361) (GST tag)**

1 Image

Overview

Quantity:	10 µg
Target:	PCMTD2
Protein Characteristics:	AA 1-361
Origin:	Human
Source:	Wheat germ
Protein Type:	Recombinant
Purification tag / Conjugate:	This PCMTD2 protein is labelled with GST tag.
Application:	ELISA, Western Blotting (WB), Affinity Purification (AP), Antibody Array (AA)

Product Details

Purpose:	PCMTD2 (Human) Recombinant Protein (P01)
Sequence:	MGGAVSAGED NDELIDNLKE AQYIRTELVE QAFRAIDRAD YYLEEFKENA YKDLAWKHGN IHLSAPCIYS EVMEALDLQP GLSFLNLGSG TGYLSSMVGL ILGPFQVNHG VELHSDVIEY AKQKLDFFIR TSDSFDKDFD CEPSFVTGNC LEISPDCSQY DRVYCGAGVQ KEHEEYMKNL LKVGILVMP LEEKLTKITR TGPSAWETKK ILAVSFAPLI QPCHSESGKS RLVQLPPVAV RSLQDLARIA IRGTIKKIIH QETVSKNGNG LKNTPRFKRR RVRRRRMETI VFLDKEVFAS RISNPSDDNS CEDLEERRE EEEKTPPETK PDPPVNFLRQ KVLSLPLPDP LKYLLLYRE K
Characteristics:	Human PCMTD2 full-length ORF ( AAH33665.1, 1 a.a. - 361 a.a.) recombinant protein with GST-tag at N-terminal.
Purification:	in vitro wheat germ expression system

## Target Details

Target:	PCMTD2
Alternative Name:	PCMTD2 ( <a href="#">PCMTD2 Products</a> )
Background:	Full Gene Name: protein-L-isoaspartate (D-aspartate) O-methyltransferase domain containing 2 Synonyms: C20orf36,FLJ10883,KIAA0835,KIAA1050
Gene ID:	55251

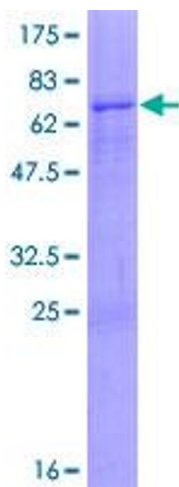
## Application Details

Application Notes:	Optimal working dilution should be determined by the investigator.
Comment:	Preparation method: in vitro, wheat germ expression system Product Quality tested by: 12.5% SDS-PAGE Stained with Coomassie Blue.
Restrictions:	For Research Use only

## Handling

Buffer:	50 mM Tris-HCl, 10 mM reduced Glutathione, pH =8.0 in the elution buffer.
Handling Advice:	Aliquot to avoid repeated freezing and thawing.
Storage:	-80 °C
Storage Comment:	Best use within three months from the date of receipt of this protein.

## Images



**Image 1.**