



[Go to Product page](#)

Datasheet for ABIN1314419

PDCD2 Protein (AA 1-344) (GST tag)

1 Image

Overview

| | |
|-------------------------------|---|
| Quantity: | 10 µg |
| Target: | PDCD2 |
| Protein Characteristics: | AA 1-344 |
| Origin: | Human |
| Source: | Wheat germ |
| Protein Type: | Recombinant |
| Purification tag / Conjugate: | This PDCD2 protein is labelled with GST tag. |
| Application: | ELISA, Western Blotting (WB), Affinity Purification (AP), Antibody Array (AA) |

Product Details

| | |
|------------------|--|
| Purpose: | PDCD2 (Human) Recombinant Protein (P01) |
| Sequence: | MAAAGARPVE LGFAESAPAW RLRSEQFPSK VGGRPAWLGA AGLPGPQALA CELCGRPLSF LLQVYAPLPG RPDADFHCIF LFCCREQPCC AGLRVFRNQL PRKNDFYSYE PPSENPPPET GESVCLQLKS GAHLCRVCGC LGPKTCRCH KAYYCSKEHQ TLDWRLGHKQ ACAQPDHLDH IIPDHNFLFP EFEIVIETED EIMPEVVEKE DYSEIIGSMG EALEEELDSM AKHESREDKI FQKFKTQIAL EPEQILRYGR GIAPIWISGE NIPQEKDIPD CPCGAKRILE FQVMPQLLNY LKADRLGKSI DWGILAVFTC AESCSLGTGY TEEFVWKQDV TDTP |
| Characteristics: | Human PDCD2 full-length ORF (NP_002589.2, 1 a.a. - 344 a.a.) recombinant protein with GST-tag at N-terminal. |
| Purification: | in vitro wheat germ expression system |

Target Details

| | |
|-------------------|--|
| Target: | PDCD2 |
| Alternative Name: | PDCD2 (PDCD2 Products) |
| Background: | Full Gene Name: programmed cell death 2 Synonyms: MGC12347,RP8,ZMYND7 |
| Gene ID: | 5134 |
| NCBI Accession: | NM_002598 |

Application Details

| | |
|--------------------|--|
| Application Notes: | Optimal working dilution should be determined by the investigator. |
| Comment: | Preparation method: in vitro, wheat germ expression system Product Quality tested by: 12.5% SDS-PAGE Stained with Coomassie Blue. |
| Restrictions: | For Research Use only |

Handling

| | |
|------------------|---|
| Buffer: | 50 mM Tris-HCl, 10 mM reduced Glutathione, pH =8.0 in the elution buffer. |
| Handling Advice: | Aliquot to avoid repeated freezing and thawing. |
| Storage: | -80 °C |
| Storage Comment: | Best use within three months from the date of receipt of this protein. |

Images

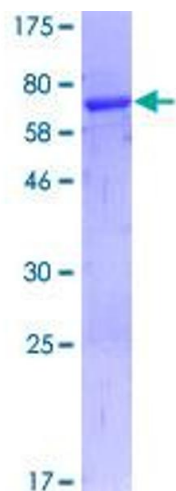


Image 1.