

Datasheet for ABIN1314456  
**PDE2A Protein (AA 850-940) (GST tag)**



[Go to Product page](#)

1 Image

Overview

Quantity:	10 µg
Target:	PDE2A
Protein Characteristics:	AA 850-940
Origin:	Human
Source:	Wheat germ
Protein Type:	Recombinant
Purification tag / Conjugate:	This PDE2A protein is labelled with GST tag.
Application:	Western Blotting (WB), ELISA, Affinity Purification (AP), Antibody Array (AA)

Product Details

Purpose:	PDE2A (Human) Recombinant Protein (Q01)
Sequence:	REKAYIPELQ ISFMEHIAMP IYKLLQDLFP KAAELYERVA SNREHWTKVS HKFTIRGLPS NNSLDFLDEE YEVPDLGTR APINGCCSLD A
Characteristics:	Human PDE2A partial ORF ( NP_002590, 850 a.a. - 940 a.a.) recombinant protein with GST-tag at N-terminal.
Purification:	in vitro wheat germ expression system

Target Details

Target:	PDE2A
Alternative Name:	PDE2A ( <a href="#">PDE2A Products</a> )

## Target Details

Background:	Full Gene Name: phosphodiesterase 2A, cGMP-stimulated Synonyms: PDE2A1,PED2A4
Gene ID:	5138
NCBI Accession:	<a href="#">NM_002599</a>
Pathways:	<a href="#">cAMP Metabolic Process</a> , <a href="#">Synaptic Membrane</a>

## Application Details

Application Notes:	Optimal working dilution should be determined by the investigator.
Comment:	Preparation method: in vitro, wheat germ expression system Product Quality tested by: 12.5% SDS-PAGE Stained with Coomassie Blue.
Restrictions:	For Research Use only

## Handling

Buffer:	50 mM Tris-HCl, 10 mM reduced Glutathione, pH =8.0 in the elution buffer.
Handling Advice:	Aliquot to avoid repeated freezing and thawing.
Storage:	-80 °C
Storage Comment:	Best use within three months from the date of receipt of this protein.

## Images

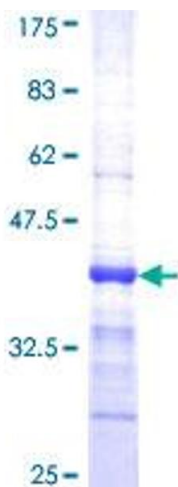


Image 1.