

Datasheet for ABIN1314458

## PDE3A Protein (AA 533-640) (GST tag)



[Go to Product page](#)

### 1 Image

#### Overview

|                               |   |
|-------------------------------|---|
| Quantity:                     | 10 µg   |
| Target:                       | PDE3A   |
| Protein Characteristics:      | AA 533-640  |
| Origin:                       | Human   |
| Source:                       | Wheat germ  |
| Protein Type:                 | Recombinant   |
| Purification tag / Conjugate: | This PDE3A protein is labelled with GST tag.                                  |
| Application:                  | Western Blotting (WB), ELISA, Affinity Purification (AP), Antibody Array (AA) |

#### Product Details

|                  |   |
|------------------|---|
| Purpose:         | PDE3A (Human) Recombinant Protein (Q01)   |
| Sequence:        | TPASSLVSKI SAVQFPESAD TTAKQSLGSH RALTYTQSAP DLSPQILTTP VICSSCGRPY<br>SQGNPADEPL ERSGVATRTP SRTDDTAQVT SDYETNNNSD SSDIVQNE |
| Characteristics: | Human PDE3A partial ORF ( NP_000912, 533 a.a. - 640 a.a.) recombinant protein with GST-tag at N-terminal.                 |
| Purification:    | in vitro wheat germ expression system   |

#### Target Details

|                   |  |
|-------------------|--|
| Target:           | PDE3A                                    |
| Alternative Name: | PDE3A ( <a href="#">PDE3A Products</a> ) |

## Target Details

|                 |   |
|-----------------|---|
| Background:     | Full Gene Name: phosphodiesterase 3A, cGMP-inhibited<br>Synonyms: CGI-PDE |
| Gene ID:        | 5139  |
| NCBI Accession: | <a href="#">NM_000921</a>   |
| Pathways:       | <a href="#">cAMP Metabolic Process</a>                                    |

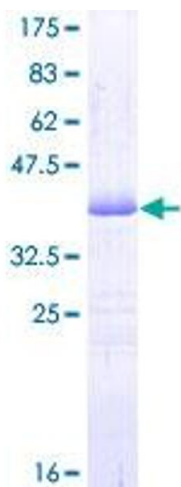
## Application Details

|                    |  |
|--------------------|--|
| Application Notes: | Optimal working dilution should be determined by the investigator.   |
| Comment:           | Preparation method: in vitro, wheat germ expression system<br>Product Quality tested by: 12.5% SDS-PAGE Stained with Coomassie Blue. |
| Restrictions:      | For Research Use only  |

## Handling

|                  |   |
|------------------|---|
| Buffer:          | 50 mM Tris-HCl, 10 mM reduced Glutathione, pH =8.0 in the elution buffer. |
| Handling Advice: | Aliquot to avoid repeated freezing and thawing.                           |
| Storage:         | -80 °C  |
| Storage Comment: | Best use within three months from the date of receipt of this protein.    |

## Images



**Image 1.**