



[Go to Product page](#)

Datasheet for ABIN1314460

## PDE3B Protein (AA 401-500) (GST tag)

### 1 Image

#### Overview

Quantity:	10 µg
Target:	PDE3B
Protein Characteristics:	AA 401-500
Origin:	Human
Source:	Wheat germ
Protein Type:	Recombinant
Purification tag / Conjugate:	This PDE3B protein is labelled with GST tag.
Application:	Western Blotting (WB), ELISA, Affinity Purification (AP), Antibody Array (AA)

#### Product Details

Purpose:	PDE3B (Human) Recombinant Protein (Q01)
Sequence:	LTPFPGFYPC SEIEDPAEKG DRKLNKGLNR NSLPTQLRR SSGTSGLLPV EQSSRWDRNN GKRPHQEFGI SSQGCYLNGP FNSNLLTIPK QRSSSVSLTH
Characteristics:	Human PDE3B partial ORF ( NP_000913, 401 a.a. - 500 a.a.) recombinant protein with GST-tag at N-terminal.
Purification:	in vitro wheat germ expression system

#### Target Details

Target:	PDE3B
Alternative Name:	PDE3B ( <a href="#">PDE3B Products</a> )

## Target Details

Background:	Full Gene Name: phosphodiesterase 3B, cGMP-inhibited Synonyms: HcGIP1,cGIPDE1
Gene ID:	5140
NCBI Accession:	<a href="#">NM_000922</a>
Pathways:	<a href="#">Negative Regulation of Hormone Secretion, Carbohydrate Homeostasis, cAMP Metabolic Process</a>

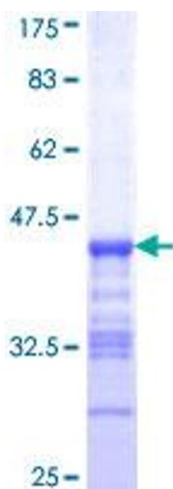
## Application Details

Application Notes:	Optimal working dilution should be determined by the investigator.
Comment:	Preparation method: in vitro, wheat germ expression system Product Quality tested by: 12.5% SDS-PAGE Stained with Coomassie Blue.
Restrictions:	For Research Use only

## Handling

Buffer:	50 mM Tris-HCl, 10 mM reduced Glutathione, pH =8.0 in the elution buffer.
Handling Advice:	Aliquot to avoid repeated freezing and thawing.
Storage:	-80 °C
Storage Comment:	Best use within three months from the date of receipt of this protein.

## Images



**Image 1.**