

Datasheet for ABIN1314475
PDE6C Protein (AA 3-100) (GST tag)



[Go to Product page](#)

1 Image

Overview

Quantity:	10 µg
Target:	PDE6C
Protein Characteristics:	AA 3-100
Origin:	Human
Source:	Wheat germ
Protein Type:	Recombinant
Purification tag / Conjugate:	This PDE6C protein is labelled with GST tag.
Application:	Western Blotting (WB), ELISA, Affinity Purification (AP), Antibody Array (AA)

Product Details

Purpose:	PDE6C (Human) Recombinant Protein (Q01)
Sequence:	EINQVAVEKY LEENPQFAKE YFDRKLRVEV LGEIFKNSQV PVQSSMSFSE LTQVEESALC LELLWTVQEE GGTPEQGVHR ALQRLAHLQ ADRCSMFL
Characteristics:	Human PDE6C partial ORF (NP_006195, 3 a.a. - 100 a.a.) recombinant protein with GST-tag at N-terminal.
Purification:	in vitro wheat germ expression system

Target Details

Target:	PDE6C
Alternative Name:	PDE6C (PDE6C Products)

Target Details

Background:	Full Gene Name: phosphodiesterase 6C, cGMP-specific, cone, alpha prime Synonyms: PDEA2
Gene ID:	5146
NCBI Accession:	NM_006204

Application Details

Application Notes:	Optimal working dilution should be determined by the investigator.
Comment:	Preparation method: in vitro, wheat germ expression system Product Quality tested by: 12.5% SDS-PAGE Stained with Coomassie Blue.
Restrictions:	For Research Use only

Handling

Buffer:	50 mM Tris-HCl, 10 mM reduced Glutathione, pH =8.0 in the elution buffer.
Handling Advice:	Aliquot to avoid repeated freezing and thawing.
Storage:	-80 °C
Storage Comment:	Best use within three months from the date of receipt of this protein.

Images

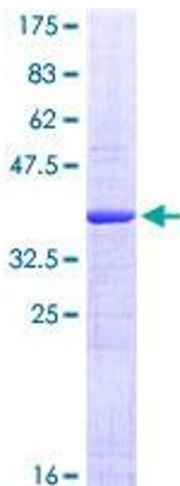


Image 1.