



[Go to Product page](#)

Datasheet for ABIN1314482

## PDE7A Protein (AA 18-117) (GST tag)

### 1 Image

#### Overview

Quantity:	10 µg
Target:	PDE7A
Protein Characteristics:	AA 18-117
Origin:	Human
Source:	Wheat germ
Protein Type:	Recombinant
Purification tag / Conjugate:	This PDE7A protein is labelled with GST tag.
Application:	Western Blotting (WB), ELISA, Affinity Purification (AP), Antibody Array (AA)

#### Product Details

Purpose:	PDE7A (Human) Recombinant Protein (Q01)
Sequence:	TSKRRGAISY DSSDQTALYI RMLGDVRVRS RAGFESERRG SHPYIDFRIF HSQSEIEVSV SARNIRLLLS FQRYLRSSRF FRGTAVSNSL NILDDDYNGQ
Characteristics:	Human PDE7A partial ORF ( NP_002594, 18 a.a. - 117 a.a.) recombinant protein with GST-tag at N-terminal.
Purification:	in vitro wheat germ expression system

#### Target Details

Target:	PDE7A
Alternative Name:	PDE7A ( <a href="#">PDE7A Products</a> )

## Target Details

Background: Full Gene Name: phosphodiesterase 7A  
Synonyms: HCP1,PDE7

Gene ID: 5150

NCBI Accession: [NM\\_002603](#)

Pathways: [cAMP Metabolic Process](#)

## Application Details

Application Notes: Optimal working dilution should be determined by the investigator.

Comment: Preparation method: in vitro, wheat germ expression system  
Product Quality tested by: 12.5% SDS-PAGE Stained with Coomassie Blue.

Restrictions: For Research Use only

## Handling

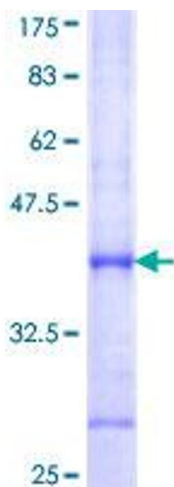
Buffer: 50 mM Tris-HCl, 10 mM reduced Glutathione, pH =8.0 in the elution buffer.

Handling Advice: Aliquot to avoid repeated freezing and thawing.

Storage: -80 °C

Storage Comment: Best use within three months from the date of receipt of this protein.

## Images



**Image 1.**