



[Go to Product page](#)

Datasheet for ABIN1314484

PDE7B Protein (AA 1-450) (GST tag)

1 Image

Overview

Quantity:	10 µg
Target:	PDE7B
Protein Characteristics:	AA 1-450
Origin:	Human
Source:	Wheat germ
Protein Type:	Recombinant
Purification tag / Conjugate:	This PDE7B protein is labelled with GST tag.
Application:	Western Blotting (WB), ELISA, Affinity Purification (AP), Antibody Array (AA)

Product Details

Purpose:	PDE7B (Human) Recombinant Protein (P01)
Sequence:	MSCLMVERCG EILFENPDQN AKCVCMLGDI RLRGQTVVRA ERRGSYPFID FRLNSTTYS GEIGTKKKVK RLLSFQRYFH ASRLLRGIIP QAPLHLLDED YLGQARHMLS KVGMWDFDIF LFDRLTNGNS LVTLLCHLFN THGLIHHFKL DMVTLHRFLV MVQEDYHSQN PYHNAVHAAD VTQAMHCYLK EPKLASFLTP LDIMLGLLAA AAHDVDHPGV NQPFLIKTNH HLANLYQNMS VLENHHWRST IGMLRESRLL AHLPKEMTQD IEQQLGSLIL ATDINRQNEF LTRLKAHLHN KDLRLEDAQD RHFMLQIALK CADICNPCRI WEMSKQWSER VCEEFYRQGE LEQKFELEIS PLCNQKDSI PSIQIGFMSY IVEPLFREWA HFTGNSTLSE NMLGHLAHNK AQWKSLLPRQ HRSRGSSGSG PDHDHAGQGT ESEEQEGDSP
Characteristics:	Human PDE7B full-length ORF (NP_061818.1, 1 a.a. - 450 a.a.) recombinant protein with GST-tag at N-terminal.

Product Details

Purification: in vitro wheat germ expression system

Target Details

Target: PDE7B

Alternative Name: PDE7B ([PDE7B Products](#))

Background: Full Gene Name: phosphodiesterase 7B
Synonyms: MGC88256,bA472E5.1

Gene ID: 27115

NCBI Accession: [NM_018945](#)

Pathways: [cAMP Metabolic Process](#)

Application Details

Application Notes: Optimal working dilution should be determined by the investigator.

Comment: Preparation method: in vitro, wheat germ expression system
Product Quality tested by: 12.5% SDS-PAGE Stained with Coomassie Blue.

Restrictions: For Research Use only

Handling

Buffer: 50 mM Tris-HCl, 10 mM reduced Glutathione, pH =8.0 in the elution buffer.

Handling Advice: Aliquot to avoid repeated freezing and thawing.

Storage: -80 °C

Storage Comment: Best use within three months from the date of receipt of this protein.

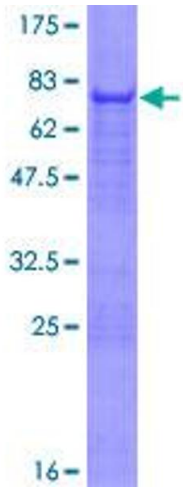


Image 1.