



[Go to Product page](#)

Datasheet for ABIN1314486

PDE7B Protein (AA 1-100) (GST tag)

1 Image

Overview

| | |
|-------------------------------|---|
| Quantity: | 10 µg |
| Target: | PDE7B |
| Protein Characteristics: | AA 1-100 |
| Origin: | Human |
| Source: | Wheat germ |
| Protein Type: | Recombinant |
| Purification tag / Conjugate: | This PDE7B protein is labelled with GST tag. |
| Application: | Western Blotting (WB), ELISA, Affinity Purification (AP), Antibody Array (AA) |

Product Details

| | |
|------------------|---|
| Purpose: | PDE7B (Human) Recombinant Protein (Q01) |
| Sequence: | MSCLMVERCG EILFENPDQN AKCVCMLGDI RLRGQTGVRA ERRGSYPFID FLLNSTTYS GEIGTKKKVK RLLSFQRYFH ASRLLRGIIP QAPLHLLDED |
| Characteristics: | Human PDE7B partial ORF (NP_061818, 1 a.a. - 100 a.a.) recombinant protein with GST-tag at N-terminal. |
| Purification: | in vitro wheat germ expression system |

Target Details

| | |
|-------------------|--|
| Target: | PDE7B |
| Alternative Name: | PDE7B (PDE7B Products) |

Target Details

Background: Full Gene Name: phosphodiesterase 7B
Synonyms: MGC88256,bA472E5.1

Gene ID: 27115

NCBI Accession: [NM_018945](#)

Pathways: [cAMP Metabolic Process](#)

Application Details

Application Notes: Optimal working dilution should be determined by the investigator.

Comment: Preparation method: in vitro, wheat germ expression system
Product Quality tested by: 12.5% SDS-PAGE Stained with Coomassie Blue.

Restrictions: For Research Use only

Handling

Buffer: 50 mM Tris-HCl, 10 mM reduced Glutathione, pH =8.0 in the elution buffer.

Handling Advice: Aliquot to avoid repeated freezing and thawing.

Storage: -80 °C

Storage Comment: Best use within three months from the date of receipt of this protein.

Images

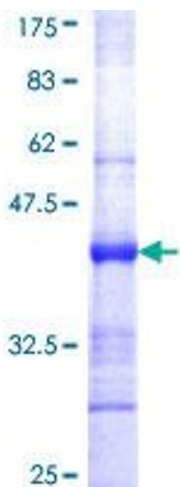


Image 1.