



[Go to Product page](#)

Datasheet for ABIN1314488

PDE8A Protein (AA 1-829) (GST tag)

1 Image

Overview

| | |
|-------------------------------|---|
| Quantity: | 10 µg |
| Target: | PDE8A |
| Protein Characteristics: | AA 1-829 |
| Origin: | Human |
| Source: | Wheat germ |
| Protein Type: | Recombinant |
| Purification tag / Conjugate: | This PDE8A protein is labelled with GST tag. |
| Application: | Western Blotting (WB), ELISA, Affinity Purification (AP), Antibody Array (AA) |

Product Details

| | |
|-----------|--|
| Purpose: | PDE8A (Human) Recombinant Protein (P01) |
| Sequence: | MGCAPSIHIS ERLVAEDAPS PAAPPLSSGG PRLPQGQKTA ALPRTRGAGL LESELRDGSG KKVAVADVQF GPMRFHQDQL QVLLVFTKED NQCNGFCRAC EKAGFKCTVT KEAQAVLACF LDKHHDIIII DHRNPRQLDA EALCRSIRSS KLSENTVIVG VVRRVDREEL SVMPFISAGF TRRYVENPNI MACYNELLQL EFGEVRSQK LACNSVF TA LENSEDAIEI TSEDRFIQYA NPAFETTMGY QSGELIGKEL GEVPINEKKA DLLDTINSCI RIGKEWQGIY YAKKKNKDNI QQNVKIIPVI GQGGKIRHYV SIIRVCNGNN KAEKISECVQ SDTHTDNQTG KHKDRRKGSL DVKAVASRAT EVSSQRRHSS MARIHSMTIE APITKVINII NAAQESSPMP VTEALDRVLE ILRTTELYSP QFGAKDDDPH ANDLVGGLMS DGLRRLSGNE YVLSTKNTQM VSSNIITPIS LDDVPPRIAR AMENEYWDF DIFELEAATH NRPLIYLGLK MFARFGICEF LHCSESTLRS WLQIIEANYH SSNPYHNSTH SADVLHATAY FLSKERIKET LDPIDEVAAL IAATIHDVDH PGRTNSFLCN AGSELAILYN DTAVLESHA ALAFQLTTGD DKCNIFKNME RNDYRTLQGG |

Product Details

IIDMVLATEM TKHFEHVNF VNSINKPLAT LEENGETDKN QEVINTMLRT PENRTLKRM
LIKCADVSNP CRPLQYCI EW AARISEEYFS QTDEEKQQGL PVMVPVFD RN TCSIPKSQIS
FIDYFITDMF DAWDAFVDLP DLMQHLDNNF KYWKGLDEMK LRNLRPPPE

Characteristics: Human PDE8A full-length ORF (NP_002596.1, 1 a.a. - 829 a.a.) recombinant protein with GST-tag at N-terminal.

Purification: in vitro wheat germ expression system

Target Details

Target: PDE8A

Alternative Name: PDE8A ([PDE8A Products](#))

Background: Full Gene Name: phosphodiesterase 8A
Synonyms: FLJ16150,HsT19550

Gene ID: 5151

NCBI Accession: [NM_002605](#)

Pathways: [cAMP Metabolic Process](#)

Application Details

Application Notes: Optimal working dilution should be determined by the investigator.

Comment: Preparation method: in vitro, wheat germ expression system
Product Quality tested by: 12.5% SDS-PAGE Stained with Coomassie Blue.

Restrictions: For Research Use only

Handling

Buffer: 50 mM Tris-HCl, 10 mM reduced Glutathione, pH =8.0 in the elution buffer.

Handling Advice: Aliquot to avoid repeated freezing and thawing.

Storage: -80 °C

Storage Comment: Best use within three months from the date of receipt of this protein.

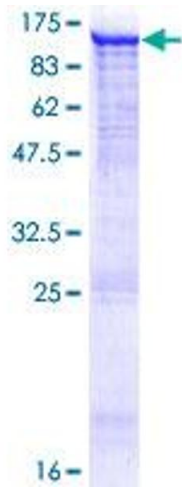


Image 1.