



[Go to Product page](#)

Datasheet for ABIN1314490

PDE8A Protein (AA 32-121) (GST tag)

1 Image

Overview

Quantity:	10 µg
Target:	PDE8A
Protein Characteristics:	AA 32-121
Origin:	Human
Source:	Wheat germ
Protein Type:	Recombinant
Purification tag / Conjugate:	This PDE8A protein is labelled with GST tag.
Application:	Western Blotting (WB), ELISA, Affinity Purification (AP), Antibody Array (AA)

Product Details

Purpose:	PDE8A (Human) Recombinant Protein (Q01)
Sequence:	RLPQGQKTAA LPRTRGAGLL ESELRDGS GK KVAVADVQFG PMRFHQDQLQ VLLVFTKEDN QCNGFCRACE KAGFKCTVTK EAQAVLACFL
Characteristics:	Human PDE8A partial ORF (NP_002596.1, 32 a.a. - 121 a.a.) recombinant protein with GST-tag at N-terminal.
Purification:	in vitro wheat germ expression system

Target Details

Target:	PDE8A
Alternative Name:	PDE8A (PDE8A Products)

Target Details

Background: Full Gene Name: phosphodiesterase 8A
Synonyms: FLJ16150,HsT19550

Gene ID: 5151

NCBI Accession: [NM_002605](#)

Pathways: [cAMP Metabolic Process](#)

Application Details

Application Notes: Optimal working dilution should be determined by the investigator.

Comment: Preparation method: in vitro, wheat germ expression system
Product Quality tested by: 12.5% SDS-PAGE Stained with Coomassie Blue.

Restrictions: For Research Use only

Handling

Buffer: 50 mM Tris-HCl, 10 mM reduced Glutathione, pH =8.0 in the elution buffer.

Handling Advice: Aliquot to avoid repeated freezing and thawing.

Storage: -80 °C

Storage Comment: Best use within three months from the date of receipt of this protein.

Images

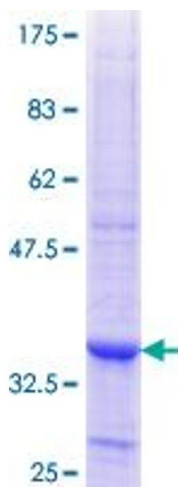


Image 1.