



[Go to Product page](#)

Datasheet for ABIN1314520

PDHA2 Protein (AA 1-388) (GST tag)

1 Image

Overview

Quantity:	25 µg
Target:	PDHA2 (PDHa2)
Protein Characteristics:	AA 1-388
Origin:	Human
Source:	Wheat germ
Protein Type:	Recombinant
Purification tag / Conjugate:	This PDHA2 protein is labelled with GST tag.
Application:	ELISA, Western Blotting (WB), Affinity Purification (AP), Antibody Array (AA)

Product Details

Purpose:	PDHA2 (Human) Recombinant Protein (P01)
Sequence:	MLAAFISRVL RRVAQKSARR VLVASRNSSN DATFEIKKCD LYLLEEGPPV TTVLTRA EGL KYYRMMLTVR RMELKADQLY KQKFIRGFCH LCDGQEACCV GLEAGINPSD HVITSYRAHG VCYTRGLSVR SILAELTGRR GGCAKGGKGS MHMYTKNFY GNGIVGAQGP LGAGIALACK YKGNDEICLT LYGDGAANQG QIAEAFNMAA LWKLPCVFIC ENNLYGMGTS TERAASP DY YKRGNFIPGL KVDGMDVLCV REATKFAANY CRSGKGPILM ELQTYRYHGH SMSDPGVS YR TREEIQEVRS KRDPHILQD RMVNSKLATV EELKEIGAEV RKEIDDAQF ATTDPEPHLE ELGHHIYSSD SSFEVRGANP WIKFKSVS
Characteristics:	Human PDHA2 full-length ORF (NP_005381.1, 1 a.a. - 388 a.a.) recombinant protein with GST-tag at N-terminal.
Purification:	in vitro wheat germ expression system

Target Details

Target:	PDHA2 (PDHa2)
Alternative Name:	PDHA2 (PDHa2 Products)
Background:	Full Gene Name: pyruvate dehydrogenase (lipoamide) alpha 2 Synonyms: MGC149517,MGC149518,PDHAL
Gene ID:	5161
NCBI Accession:	NM_005390
Pathways:	Warburg Effect

Application Details

Application Notes:	Optimal working dilution should be determined by the investigator.
Comment:	Preparation method: in vitro, wheat germ expression system Product Quality tested by: 12.5% SDS-PAGE Stained with Coomassie Blue.
Restrictions:	For Research Use only

Handling

Buffer:	50 mM Tris-HCl, 10 mM reduced Glutathione, pH =8.0 in the elution buffer.
Handling Advice:	Aliquot to avoid repeated freezing and thawing.
Storage:	-80 °C
Storage Comment:	Best use within three months from the date of receipt of this protein.

Images

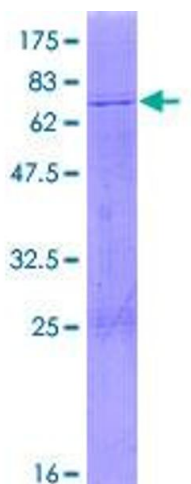


Image 1.