



[Go to Product page](#)

Datasheet for ABIN1314553  
**PDK3 Protein (AA 1-406) (GST tag)**

1 Image

Overview

Quantity:	25 µg
Target:	PDK3
Protein Characteristics:	AA 1-406
Origin:	Human
Source:	Wheat germ
Protein Type:	Recombinant
Purification tag / Conjugate:	This PDK3 protein is labelled with GST tag.
Application:	Western Blotting (WB), Affinity Purification (AP), Antibody Array (AA), ELISA

Product Details

Purpose:	PDK3 (Human) Recombinant Protein (P01)
Sequence:	MRLFRWLLKQ PVPKQIERYS RFSPSPLSIK QFLDFGRDNA CEKTSYMFLLR KELPVRLANT MREVNLLPDN LLNRPSVGLV QSWYMQSFLE LLEYENKSPE DPQVLDNFLQ VLIKVRNRHN DVVPTMAQGV IEYKEKFGFD PFISTNIQYF LDRFYTNRIS FRMLINQHTL LFGGDTNPVH PKHIGSIDPT CNVADVVKDA YETAKMLCEQ YYLVAPELEV EEFNAKAPDK PIQVVYVPSH LFHMLFELFK NSMRATVELY EDRKEGYPAV KTLVTLGKED LSIKISDLGG GVPLRKIDRL FNMYSTAPR PSLEPTRAAP LAGFGYGLPI SRLYARYFQG DLKLYSMEGV GTDAVIYLKA LSSSEFERLP VFNKSAWRHY KTTPEADDWS NPSSEPRDAS KYKAKQ
Characteristics:	Human PDK3 full-length ORF ( NP_005382.1, 1 a.a. - 406 a.a.) recombinant protein with GST-tag at N-terminal.
Purification:	in vitro wheat germ expression system

## Target Details

---

Target:	PDK3
Alternative Name:	PDK3 ( <a href="#">PDK3 Products</a> )
Background:	Full Gene Name: pyruvate dehydrogenase kinase, isozyme 3 Synonyms:
Gene ID:	5165
NCBI Accession:	<a href="#">NM_005391</a>
Pathways:	<a href="#">PI3K-Akt Signaling</a> , <a href="#">Carbohydrate Homeostasis</a> , <a href="#">Regulation of Carbohydrate Metabolic Process</a> , <a href="#">Warburg Effect</a>

## Application Details

---

Application Notes:	Optimal working dilution should be determined by the investigator.
Comment:	Preparation method: in vitro, wheat germ expression system Product Quality tested by: 12.5% SDS-PAGE Stained with Coomassie Blue.
Restrictions:	For Research Use only

## Handling

---

Buffer:	50 mM Tris-HCl, 10 mM reduced Glutathione, pH =8.0 in the elution buffer.
Handling Advice:	Aliquot to avoid repeated freezing and thawing.
Storage:	-80 °C
Storage Comment:	Best use within three months from the date of receipt of this protein.

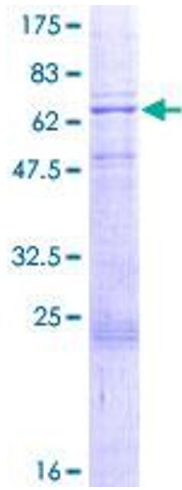


Image 1.