

Datasheet for ABIN1314594  
**PDXDC1 Protein (AA 1-788) (GST tag)**



[Go to Product page](#)

1 Image

Overview

Quantity:	10 µg
Target:	PDXDC1
Protein Characteristics:	AA 1-788
Origin:	Human
Source:	Wheat germ
Protein Type:	Recombinant
Purification tag / Conjugate:	This PDXDC1 protein is labelled with GST tag.
Application:	ELISA, Western Blotting (WB), Affinity Purification (AP), Antibody Array (AA)

Product Details

Purpose:	PDXDC1 (Human) Recombinant Protein (P01)
Sequence:	<p>MDSLEKIAD PTLAEMGKNL KEAVKMLEDS QRRTEEENGK KLISGDIPGP LQSGSQDMVS ILQLVQNLHM GDEDEEPQSP RIQNIGEQQH MALLGHSLGA YISTLDKEKL RKLTRILSD TTLWLCRIFR YENGCAFYHE EEREGLAKIC RLAIHSRYED FVVDGFNVLY NKKPVIYLSA AARPLGQYL CNQLGLPFPC LCRVPCNTVF GSQHQMDVAF LEKLIKDDIE RGRLPLLLVA NAGTAAVGHT DKIGRLKELC EQYGIWLHVE GVNLATLALG YVSSSVLAAA KCDSMTMTPG PWLGLPAVPA VTLYKHDDPA LTLVAGLTSN KPTDKLRALP LWLSLQYLGL DGFVERIKHA CQLSURLQES LKEVNYIKIL VEDELSSPVV VFRFFQELPG SDPVFKAVPV PNMTPSGVGR ERHSCDALNR WLGEQLKQLV PASGLTVM DL EAEGTCLRFS PLMTAAVLGT RGEDVDQLVA CIESKLPVLC CTLQLREEFK QEVEATAGLL YVDDPNWSGI GVVRYEHAND DKSSLKSDPE GENIHAGLLK KLNELSDLT FKIGPEYKSM KSCLYVGMAS DNVDAAE LVE TIAATAREIE ENSRLLNMT EVVRKGIQEA QVELQKASEE RLLEEGVLRQ IPVVGSVLNW FSPVQALQKG</p>

## Product Details

---

RTFNLTAGSL ESTEPIYVYK AQGAGVTLPP TPSGSRTKQR LPGQKPFKRS LRGSDALSET  
SSVSHIEDLE KVERLSSGPE QITLEASSTE GHPGAPSPQH TDQTEAFQKG VPHPEDDHSQ  
VEGPESLR

Characteristics: Human PDXDC1 full-length ORF ( AAH60871.1, 1 a.a. - 788 a.a.) recombinant protein with GST-tag at N-terminal.

Purification: in vitro wheat germ expression system

## Target Details

---

Target: PDXDC1

Alternative Name: PDXDC1 ([PDXDC1 Products](#))

Background: Full Gene Name: pyridoxal-dependent decarboxylase domain containing 1  
Synonyms: KIAA0251,LP8165

Gene ID: 23042

## Application Details

---

Application Notes: Optimal working dilution should be determined by the investigator.

Comment: Preparation method: in vitro, wheat germ expression system  
Product Quality tested by: 12.5% SDS-PAGE Stained with Coomassie Blue.

Restrictions: For Research Use only

## Handling

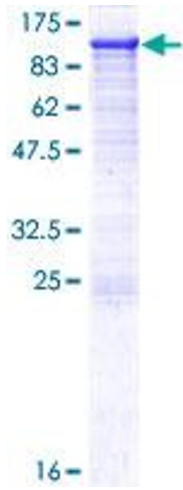
---

Buffer: 50 mM Tris-HCl, 10 mM reduced Glutathione, pH =8.0 in the elution buffer.

Handling Advice: Aliquot to avoid repeated freezing and thawing.

Storage: -80 °C

Storage Comment: Best use within three months from the date of receipt of this protein.



**Image 1.**