



[Go to Product page](#)

Datasheet for ABIN1314607

## PDZD11 Protein (AA 1-140) (GST tag)

### 1 Image

#### Overview

Quantity:	25 µg
Target:	PDZD11
Protein Characteristics:	AA 1-140
Origin:	Human
Source:	Wheat germ
Protein Type:	Recombinant
Purification tag / Conjugate:	This PDZD11 protein is labelled with GST tag.
Application:	ELISA, Western Blotting (WB), Affinity Purification (AP), Antibody Array (AA)

#### Product Details

Purpose:	PDZD11 (Human) Recombinant Protein (P01)
Sequence:	MDSRIPYDDY PVVFLPAYEN PPAWIPPHER VHHPDYNNEL TQFLPRTITL KKPPGAQLGF NIRGGKASQL GIFISKVIPD SDAHRAQLQE GDQVLAVNDV DFQDIEHska VEILKTAREI SMRVRFFPYN YHRQKERTVH
Characteristics:	Human PDZD11 full-length ORF ( NP_057568.1, 1 a.a. - 140 a.a.) recombinant protein with GST-tag at N-terminal.
Purification:	in vitro wheat germ expression system

#### Target Details

Target:	PDZD11
Alternative Name:	PDZD11 ( <a href="#">PDZD11 Products</a> )

## Target Details

Background: Full Gene Name: PDZ domain containing 11  
Synonyms: AIPP1,PDZK11,PISP

Gene ID: 51248

NCBI Accession: [NM\\_016484](#)

Pathways: [SARS-CoV-2 Protein Interactome](#)

## Application Details

Application Notes: Optimal working dilution should be determined by the investigator.

Comment: Preparation method: in vitro, wheat germ expression system  
Product Quality tested by: 12.5% SDS-PAGE Stained with Coomassie Blue.

Restrictions: For Research Use only

## Handling

Buffer: 50 mM Tris-HCl, 10 mM reduced Glutathione, pH =8.0 in the elution buffer.

Handling Advice: Aliquot to avoid repeated freezing and thawing.

Storage: -80 °C

Storage Comment: Best use within three months from the date of receipt of this protein.

## Images

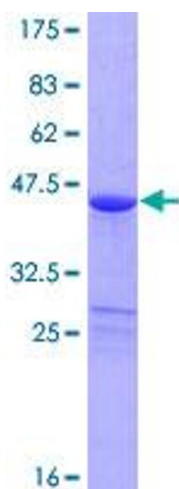


Image 1.