



[Go to Product page](#)

Datasheet for ABIN1314632

## PECI/ECI2 Protein (AA 1-364) (GST tag)

### 1 Image

#### Overview

Quantity:	10 µg
Target:	PECI/ECI2 (PECI)
Protein Characteristics:	AA 1-364
Origin:	Human
Source:	Wheat germ
Protein Type:	Recombinant
Purification tag / Conjugate:	This PECI/ECI2 protein is labelled with GST tag.
Application:	ELISA, Western Blotting (WB), Affinity Purification (AP), Antibody Array (AA)

#### Product Details

Purpose:	PECI (Human) Recombinant Protein (P01)
Sequence:	MNRTAMRASQ KDFENSMNQV KLLKKDPGNE VKLKLYALYK QATEGPCNMP KPGVFDLINK AKWDAWNALG SLPKEAARQN YVDLVSSLSP SLESSSQVEP GTDRKSTGFE TLVVTSEDGI TKIMFNRPKK KNAINTEMYH EIMRALKAAAS KDDSIITVLT GNGDYSSGN DLTNFTDIPP GGVEEKAKNN AVLLREFVGC FIDFPKPLIA VVNGPAVGIS VTLLGLFDAV YASDRATFHT PFSHLGQSPE GCSSYTFPKI MSPAKATEML IFGKKL TAGE ACAQGLVTEV FPDSTFQKEV WTRLKAFACL PPNALRISKE VIRKREREKL HAVNAEECNV LQGRWLSDEC TNAVVNFLSR KSKL
Characteristics:	Human PECI full-length ORF ( AAH34702, 1 a.a. - 364 a.a.) recombinant protein with GST-tag at N-terminal.
Purification:	in vitro wheat germ expression system

## Target Details

Target:	PECI/ECI2 (PECI)
Alternative Name:	PECI ( <a href="#">PECI Products</a> )
Background:	Full Gene Name: peroxisomal D3,D2-enoyl-CoA isomerase Synonyms: ACBD2,DRS1,HCA88,KIAA0536,dJ1013A10.3
Gene ID:	10455

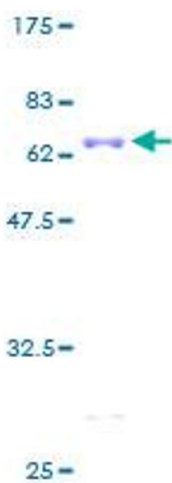
## Application Details

Application Notes:	Optimal working dilution should be determined by the investigator.
Comment:	Preparation method: in vitro, wheat germ expression system Product Quality tested by: 12.5% SDS-PAGE Stained with Coomassie Blue.
Restrictions:	For Research Use only

## Handling

Buffer:	50 mM Tris-HCl, 10 mM reduced Glutathione, pH =8.0 in the elution buffer.
Handling Advice:	Aliquot to avoid repeated freezing and thawing.
Storage:	-80 °C
Storage Comment:	Best use within three months from the date of receipt of this protein.

## Images



### SDS-PAGE

Image 1.