

Datasheet for ABIN1314634

PECI/ECI2 Protein (AA 265-364) (GST tag)



[Go to Product page](#)

1 Image

Overview

Quantity:	10 µg
Target:	PECI/ECI2 (PECI)
Protein Characteristics:	AA 265-364
Origin:	Human
Source:	Wheat germ
Protein Type:	Recombinant
Purification tag / Conjugate:	This PECI/ECI2 protein is labelled with GST tag.
Application:	ELISA, Western Blotting (WB), Affinity Purification (AP), Antibody Array (AA)

Product Details

Purpose:	PECI (Human) Recombinant Protein (Q01)
Sequence:	KATEMLIFGK KLTAGEACQ GLVTEVFPDS TFQKEVWTRL KAFAKLPPNA LRISKEVIRK REREKLHAVN AEECNVLQGR WLSDECTNAV VNFLSRKSKL
Characteristics:	Human PECI partial ORF (NP_006108, 265 a.a. - 364 a.a.) recombinant protein with GST-tag at N-terminal.
Purification:	in vitro wheat germ expression system

Target Details

Target:	PECI/ECI2 (PECI)
Alternative Name:	PECI (PECI Products)

Target Details

Background:	Full Gene Name: peroxisomal D3,D2-enoyl-CoA isomerase Synonyms: ACBD2,DRS1,HCA88,KIAA0536,dJ1013A10.3
Gene ID:	10455
NCBI Accession:	NM_006117

Application Details

Application Notes:	Optimal working dilution should be determined by the investigator.
Comment:	Preparation method: in vitro, wheat germ expression system Product Quality tested by: 12.5% SDS-PAGE Stained with Coomassie Blue.
Restrictions:	For Research Use only

Handling

Buffer:	50 mM Tris-HCl, 10 mM reduced Glutathione, pH =8.0 in the elution buffer.
Handling Advice:	Aliquot to avoid repeated freezing and thawing.
Storage:	-80 °C
Storage Comment:	Best use within three months from the date of receipt of this protein.

Images

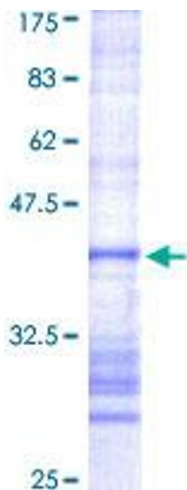


Image 1.