

Datasheet for ABIN1314638  
**PEF1 Protein (AA 1-284) (GST tag)**



[Go to Product page](#)

1 Image

Overview

Quantity:	10 µg
Target:	PEF1
Protein Characteristics:	AA 1-284
Origin:	Human
Source:	Wheat germ
Protein Type:	Recombinant
Purification tag / Conjugate:	This PEF1 protein is labelled with GST tag.
Application:	ELISA, Western Blotting (WB), Affinity Purification (AP), Antibody Array (AA)

Product Details

Purpose:	PEF1 (Human) Recombinant Protein (P01)
Sequence:	MASYPYRQGC PGAAGQAPGA PPGSYYPGPP NSGGQYGSGL PPGGGYGGPA PGGPYGPPAG GGPYGHPNPG MFPSGTPGGP YGGAAPGGPY GQPPPSSYGA QQPGLYGQGG APPNVDPEAY SWFQSVSDSH SGYISMKELK QALVNCNWSS FNDETCLMMI NMFDKTKSGR IDVYGFSAW KFIQQWKNLF QQYDRDRSGS ISYTELQAL SQMGYNLSPQ FTQLLVSRYS PRSANPAMQL DRFIQVCTQL QVLTEAFREK DTAVQGNIRL SFEDFVTMTA SRML
Characteristics:	Human PEF1 full-length ORF ( NP_036524.1, 1 a.a. - 284 a.a.) recombinant protein with GST-tag at N-terminal.
Purification:	in vitro wheat germ expression system

## Target Details

Target:	PEF1
Alternative Name:	PEF1 ( <a href="#">PEF1 Products</a> )
Background:	Full Gene Name: penta-EF-hand domain containing 1 Synonyms: PEF1A,PEFLIN
Gene ID:	553115
NCBI Accession:	<a href="#">NM_012392</a>

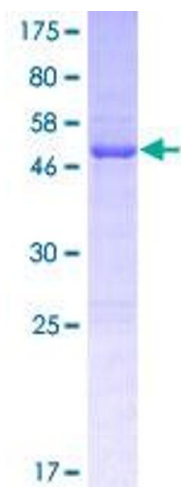
## Application Details

Application Notes:	Optimal working dilution should be determined by the investigator.
Comment:	Preparation method: in vitro, wheat germ expression system Product Quality tested by: 12.5% SDS-PAGE Stained with Coomassie Blue.
Restrictions:	For Research Use only

## Handling

Buffer:	50 mM Tris-HCl, 10 mM reduced Glutathione, pH =8.0 in the elution buffer.
Handling Advice:	Aliquot to avoid repeated freezing and thawing.
Storage:	-80 °C
Storage Comment:	Best use within three months from the date of receipt of this protein.

## Images



**Image 1.**