



[Go to Product page](#)

Datasheet for ABIN1314647
PELO Protein (AA 1-385) (GST tag)

1 Image

Overview

Quantity:	10 µg
Target:	PELO
Protein Characteristics:	AA 1-385
Origin:	Human
Source:	Wheat germ
Protein Type:	Recombinant
Purification tag / Conjugate:	This PELO protein is labelled with GST tag.
Application:	ELISA, Western Blotting (WB), Affinity Purification (AP), Antibody Array (AA)

Product Details

Purpose:	PELO (Human) Recombinant Protein (P01)
Sequence:	MKLV RKNIK E DNAGQVTLVP EEPEDMWHTY NLVQVGD SLR ASTIRKVQTE SSTG SVGSNR VRTTLTLCVE AIDFDSQACQ LRVKGTNIQE NEYVKMGAYH TIELEPNRQF TLAKKQWDSV VLERIEQACD PAWSADVA AV VMQEGLAHIC LVTPSMTLTR AKVEVNIPRK RKGNC SQHDR ALERFYEQVV QAIQRHIFD VVKCILV ASP GFVREQFCDY MFQQAVKTDN KLLLENRSKF LQVHASSGHK YSLKEALCDP TVASRLSDTK AAGEVKALDD FYKMLQHEPD RAFYGLKQVE KANEAMAIDT LLISDELFRH QDVATRSRYV RLVD SVKENA GTVRIFSSLH VSQEQLS QLT GVAAILRFPV PELSDQEGDS SSEED
Characteristics:	Human PELO full-length ORF (AAH05889.1, 1 a.a. - 385 a.a.) recombinant protein with GST-tag at N-terminal.
Purification:	in vitro wheat germ expression system

Target Details

Target:	PELO
Alternative Name:	PELO (PELO Products)
Background:	Full Gene Name: pelota homolog (Drosophila) Synonyms: CGI-17,PRO1770
Gene ID:	53918

Application Details

Application Notes:	Optimal working dilution should be determined by the investigator.
Comment:	Preparation method: in vitro, wheat germ expression system Product Quality tested by: 12.5% SDS-PAGE Stained with Coomassie Blue.
Restrictions:	For Research Use only

Handling

Buffer:	50 mM Tris-HCl, 10 mM reduced Glutathione, pH =8.0 in the elution buffer.
Handling Advice:	Aliquot to avoid repeated freezing and thawing.
Storage:	-80 °C
Storage Comment:	Best use within three months from the date of receipt of this protein.

Images

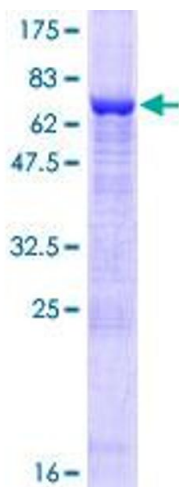


Image 1.